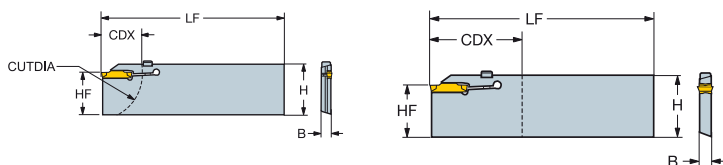
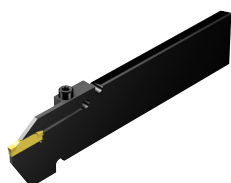


CoroCut® 1-2 blade for parting

Screw clamp design



Single ended parting blade

SSC	CZC _{MS}	CDX	CUTDIA	OHX	OHN	CNSC	Ordering code	Dimensions, mm, inch						MIID
								H	LF	WF	HF			
E	21	20.0	40.0	45.0	0	R/LF123E20-21B1	25.9	110.0	7.3	21.4	3.3	0.2	N123E2-0200-0002-CM	
							<i>1.020</i>	<i>4.331</i>	<i>.285</i>	<i>.843</i>	3.3	0.3		
							<i>.984</i>	<i>1.969</i>	<i>1.772</i>	31.9				150.0
F	21	25.0	50.0	45.0	0	R/LF123F25-21B1	25.9	110.0	7.0		21.4	3.3	0.2	
							<i>1.020</i>	<i>4.331</i>	<i>.276</i>	<i>.843</i>	3.6	0.3		
							<i>.984</i>	<i>1.969</i>	<i>1.772</i>	31.9			150.0	8.3
G	21	30.0	60.0	51.0	0	R/LF123G30-21B1	25.9	110.0	6.9		21.4	4.5		
							<i>1.020</i>	<i>4.331</i>	<i>.270</i>	<i>.843</i>	4.5	0.3		
							<i>.984</i>	<i>1.969</i>	<i>1.772</i>	31.9			150.0	8.3
H	25	32.0	64.0	51.0	0	R/LF123H32-25B1	31.9	150.0	8.3		25.0	4.9		
							<i>1.256</i>	<i>5.906</i>	<i>.328</i>	<i>.984</i>	4.9	0.3		
							<i>1.299</i>	<i>2.598</i>	<i>2.126</i>	31.9			150.0	6.9
M	45	100.0	100.0	73.0	0	R/LF123M100-45B1	52.5	250.0	9.6		45.0	4.5		
							<i>2.067</i>	<i>9.843</i>	<i>.379</i>	<i>1.77</i>	4.5	1.9		
							<i>4.724</i>	<i>4.724</i>	<i>3.268</i>	101.6			300.0	9.6
R	93	120.0	120.0	83.0	0	R/LF123R120-93B1	101.6	300.0	13.1		93.5	4.5		
							<i>4.000</i>	<i>11.81</i>	<i>.379</i>	<i>3.68</i>	4.5	1.9		
							<i>4.724</i>	<i>4.724</i>	<i>3.268</i>	101.6			300.0	13.1

SSC = To correspond with SSC on insert.

R = Right hand, L = Left hand

