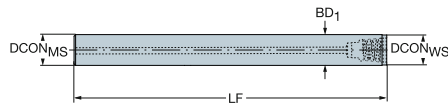
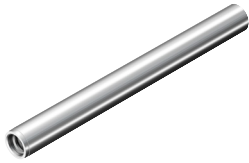


# Cylindrical shank to Coromant EH adapter

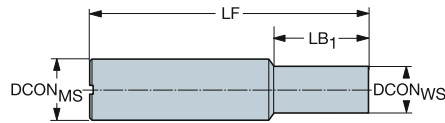
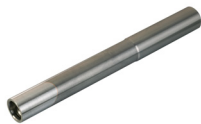
Straight design

Metric version



## Heavy metal G undersized shank

		Dimensions, mm, inch												
CZC <sub>MS</sub>	CZC <sub>WS</sub>	CNSC	CXSC	Ordering code	DCON <sub>MS</sub>	DCON <sub>WS</sub>	LSC	LF	LB <sub>1</sub>	BD <sub>1</sub>	CP Bar/PSI	Kg	BBD	RPMX
9	E10	1	1	EH10-A09.7-SH-100	9.7	9.6	97	100.0	100.0	9.7	80	0.10	1	23000
					.382	.378	3.819	3.937	3.937	.382	1160			
11	E12	1	1	EH12-A11.7-SH-110	11.7	11.6	107	110.0	110.0	11.7	80	0.20	1	23000
					.461	.457	4.213	4.331	4.331	.461	1160			
15	E16	1	1	EH16-A15.7-SH-130	15.7	15.4	126	130.0	130.0	15.7	80	0.40	1	19000
					.618	.606	4.961	5.118	5.118	.618	1160			
19	E20	1	1	EH20-A19.7-SH-160	19.7	19.2	156	160.0	160.0	19.7	80	0.80	1	19000
					.776	.756	6.142	6.299	6.299	.776	1160			
24	E25	1	1	EH25-A24.7-SH-185	24.7	24.1	181	185.0	185.0	24.7	80	1.40	1	14000
					.972	.949	7.126	7.283	7.283	.972	1160			



## Cemented carbide shank

		Dimensions, mm, inch														
CZC <sub>MS</sub>	CZC <sub>WS</sub>	CNSC	CXSC	Ordering code	DCON <sub>MS</sub>	DCON <sub>WS</sub>	LSC	LF	LB <sub>1</sub>	LB <sub>2</sub>	BD <sub>1</sub>	BD <sub>2</sub>	CP Bar/PSI	Kg	BBD	RPMX
10	E10	1	1	E10-A10-SE-100	10.0	9.6	49	100.0	50.0	100.0	9.6	10.0	80	0.78	1	35000
					.394	.378	1.929	3.937	1.969	3.937	.378	.394	1160			
12	E12	1	1	E12-A12-SE-100	12.0	11.6	51	100.0	48.0	100.0	11.6	12.0	80	1.44	1	40000
					.472	.457	2.008	3.937	1.890	3.937	.457	.472	1160			
16	E16	1	1	E16-A16-SE-135	16.0	15.4	54	135.0	80.0	135.0	15.4	16.0	80	0.11	1	27000
					.630	.606	2.126	5.315	3.150	5.315	.606	.630	1160			
20	E20	1	1	E20-A20-SE-095	20.0	19.2	56	95.0	38.0	95.0	19.2	20.0	80	0.16	1	40000
					.787	.756	2.205	3.740	1.496	3.740	.756	.787	1160			
	E20	1	1	E20-A20-SE-180	20.0	19.2	69	180.0	110.0	180.0	19.2	20.0	80	0.44	1	20000
					.787	.756	2.717	7.087	4.331	7.087	.756	.787	1160			
25	E25	1	1	E25-A25-SE-200	25.0	24.1	79	200.0	120.0	200.0	24.1	25.0	80	0.39	1	19000
					.984	.949	3.110	7.874	4.724	7.874	.949	.984	1160			

Q5



Q1



Q35



Q30

