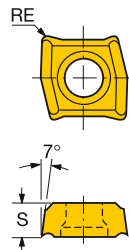
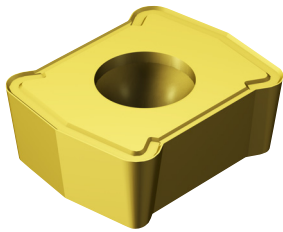
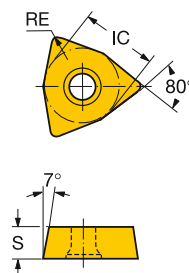
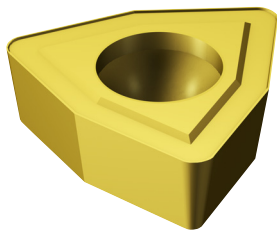


Coromant U insert for drilling



Ordering code	INSUC	P												M			K			N			S			H		Dimensions, mm, inch			
		1020	1120	235	3040	1020	1120	235	3040	H13A	1020	3040	H13A	1020	1120	H13A	1020	1120	H13A	1020	1120	S	S"	RE	RE"						
02	LCMX 02 02 04C-53	C	☆																							2.38	.093	0.40	.015		
	LCMX 02 02 04P-53	P		☆																							2.38	.093	0.40	.015	
	LCMX 02 02 04TC-53	C	☆																								2.38	.093	0.40	.015	
03	LCMX 03 03 04-58	P			☆	☆																					3.17	.125	0.40	.015	
	LCMX 03 03 04R-WM	P	☆			☆	☆																				3.17	.125	0.45	.017	
	LCMX 03 03 08-53	P+C	☆			☆	☆																				3.17	.125	0.80	.031	
	LCMX 03 03 08T-53	P+C	☆			☆	☆																				3.17	.125	0.80	.031	
04	LCMX 04 03 04-58	P			☆	☆																					3.17	.125	0.40	.015	
	LCMX 04 03 04R-WM	P	☆			☆	☆																				3.17	.125	0.40	.015	
	LCMX 04 03 08-53	P+C	☆			☆	☆																				3.17	.125	0.80	.031	
	LCMX 04 03 08T-53	P+C	☆			☆	☆																				3.17	.125	0.80	.031	



Ordering code	INSUC	P												M					K					N			S		H		Dimensions, mm, inch																					
		1020	1025	1125	235	3040	4125	4235	H13A	1020	1025	235	3040	4235	H13A	1020	1025	1105	1125	235	3040	4125	4235	H13A	1020	1105	H13A	1020	H13A	1020	S	S"	RE	RE"	IC	IC"																
05	WCMX 05 03 04R-WM	P	☆																																					3.17	.125	0.40	.015	7.93	.312							
	WCMX 05 03 08 R-51	P				☆																																				3.17	.125	0.80	.031	7.93	.312					
	WCMX 05 03 08 R-53	P+C	☆				☆																																				3.17	.125	0.80	.031	7.93	.312				
	WCMX 05 03 08 T-53	P+C	☆																																									3.17	.125	0.80	.031	7.93	.312			
	WCMX 05 03 08-54	P+C				☆																																						3.17	.125	0.80	.031	7.93	.312			
	WCMX 05 03 08-56	P				☆																																						3.17	.125	0.80	.031	7.93	.312			
	WCMX 05 03 08-58	P				☆	☆																																					3.17	.125	0.80	.031	7.93	.312			
	WCMX 05 03 S R-54	C				☆	☆																																					3.17	.125	0.40	.015	7.93	.312			
06	WCMX 06 T3 04R-WM	P	☆																																										3.96	.156	0.40	.015	9.52	.375		
	WCMX 06 T3 08 T-53	P+C	☆																																										3.96	.156	0.80	.031	9.52	.375		
	WCMX 06 T3 08-GM	P+C	☆	☆																																										3.96	.156	0.80	.031	9.52	.375	
	WCMX 06 T3 S R-56	C				☆																																							3.96	.156	0.80	.031	9.52	.375		
08	WCMX 08 04 12 R-51	P	☆																																												4.76	.187	1.20	.047	12.70	.500
	WCMX 08 04 12 R-53	P+C	☆																																												4.76	.187	1.20	.047	12.70	.500
	WCMX 08 04 12 T-53	P+C	☆																																												4.76	.187	1.20	.047	12.70	.500
	WCMX 08 04 12-56	P				☆																																									4.76	.187	1.20	.047	12.70	.500
	WCMX 08 04 12-58	P				☆	☆																																								4.76	.187	1.20	.047	12.70	.500
	WCMX 08 04 12-GM	P+C	☆	☆																																											4.76	.187	1.20	.047	12.70	.500
	WCMX 08 04 S R-56	C				☆																																									4.76	.187	0.40	.015	12.70	.500



K203



K254



Q1