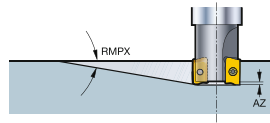
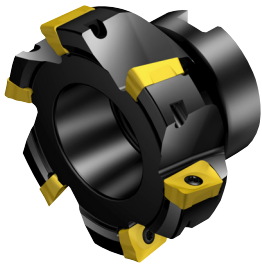


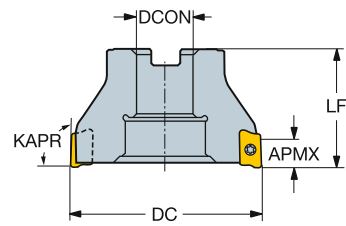
# CoroMill® 390 square shoulder milling cutter

Arbor



KAPR

90°



## CIS version

DC	CZC <sub>MS</sub>	APMX	RMPX	AZ	CNSC	Ordering code	Dimensions							CICT	MIID		
							DCON	DBC	DCX	LF	Nm	Kg	RPMX				
80.0	17	1	15.7	1.6°	1.5	0	4	RA390-080J25.4-17L	25.4	80.0	50.0	3.0	0.94	14400	4	R390-17..	
17	1	15.7	1.6°	1.5	0	6	RA390-080J25.4-17M	25.4	80.0	50.0	3.0	0.94	14400	6	R390-17..		
17	1	15.7	1.6°	1.5	0	8	RA390-080J25.4-17H	25.4	80.0	50.0	3.0	0.92	14400	8	R390-17..		
18	1	15.4	3.1°	0.0	0	6	RA390-080J25.4-18M	25.4	80.0	50.0	3.0	1.15	5900	6	R390-18..		
100.0	18	1 1/4	15.4	0.0°	0.0	0	7	RA390-100J31.75-18M	31.8	100.0	50.0	3.0	1.80	5200	7	R390-18..	
125.0	18	1 1/2	15.4	0.0°	0.0	0	8	RA390-125J38.1-18M	38.1	125.0	63.0	3.0	3.00	4600	8	R390-18..	
160.0	18	2	15.4	0.0°	0.0	0	12	RA390-160J50.8-18M	50.8	160.0	63.0	3.0	8.30	4000	12	R390-18..	
200.0	18	1 7/8	15.4	0.0°	0.0	0	10	RA390-200J47.625-18L	47.6	66.7	200.0	63.0	3.0	8.30	3600	10	R390-18..



J112



O5



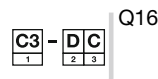
Q5



Q1



Q35



Q16