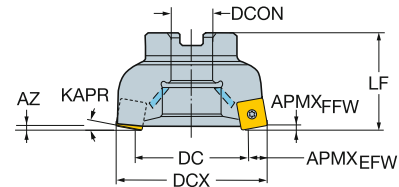
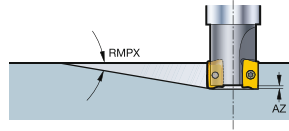
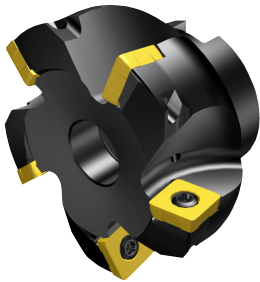


CoroMill® 210 face milling cutter

Arbor

STDNO
KAPR

ISO 6462:2011
10°



Metric version

										Dimensions								
DC	CZC _{MS}	APMX _{EFW}	APMX _{FFW}	AZ	RMPX	CNSC	Ordering code		DCON	ISO	DCX	LF	Nm	Kg	RPMX	CICT	MIID	
35.9	09	22	8.0	1.2	1.8	3°	1	4	R210-050Q22-09M	22.0	A	50.0	50.0	3.0	0.50	24500	4	R210-090412M-
	09	22	8.0	1.2	1.8	3°	1	5	R210-050Q22-09H	22.0	A	50.0	50.0	3.0	0.50	24500	5	R210-090412M-
39.0	14	22	13.0	2.0	2.0	3°	1	5	R210-063Q22-14H	22.0	A	63.0	50.0	5.0	0.70	18300	5	R210-140512M-
	14	22	13.0	2.0	2.0	3°	1	4	R210-063Q22-14M	22.0	A	63.0	50.0	5.0	0.70	18300	4	R210-140512M-
	14	27	13.0	2.0	2.0	3°	1	4	R210-063Q27-14M	27.0	A	63.0	50.0	5.0	0.70	18300	4	R210-140512M-
48.9	09	22	8.0	1.2	1.8	2°	1	5	R210-063Q22-09M	22.0	A	63.0	50.0	3.0	0.70	21800	5	R210-090412M-
	09	22	8.0	1.2	1.8	2°	1	6	R210-063Q22-09H	22.0	A	63.0	50.0	3.0	0.55	21800	6	R210-090412M-
	09	27	8.0	1.2	1.8	2°	1	5	R210-063Q27-09M	27.0	A	63.0	50.0	3.0	0.70	21800	5	R210-090412M-
56.0	14	27	13.0	2.0	2.0	2°	1	5	R210-080Q27-14M	27.0	A	80.0	50.0	5.0	1.17	15400	5	R210-140512M-
	14	27	13.0	2.0	2.0	2°	1	6	R210-080Q27-14H	27.0	A	80.0	50.0	5.0	1.17	15400	6	R210-140512M-
76.0	14	32	13.0	2.0	2.0	1°	1	7	R210-100Q32-14H	32.0	B	100.0	50.0	5.0	1.60	13400	7	R210-140512M-
	14	32	13.0	2.0	2.0	1°	1	6	R210-100Q32-14M	32.0	B	100.0	50.0	5.0	1.60	13400	6	R210-140512M-
101.0	14	40	13.0	2.0	2.0	1°	1	7	R210-125Q40-14M	40.0	B	125.0	63.0	5.0	3.30	11400	7	R210-140512M-
136.0	14	40	13.0	2.0	2.0	1°	1	8	R210-160Q40-14M	40.0	B	160.0	63.0	5.0	5.30	10400	8	R210-140512M-

Inch version

										Dimensions, inch								
DC	CZC _{MS}	APMX _{EFW}	APMX _{FFW}	AZ	RMPX	CNSC	Ordering code		DCON	ISO	DCX	LF	Ft/lbs	Lbs	RPMX	CICT	MIID	
1.445	09	3/4	.315	.047	.071	3°	1	4	RA210-051R19-09M	.750	A	2.000	1.969	2.2	1.10	24800	4	R210-090412M-
	09	3/4	.315	.047	.071	3°	1	5	RA210-051R19-09H	.750	A	2.000	1.969	2.2	1.10	24800	5	R210-090412M-
1.555	14	3/4	.512	.079	.039	3°	1	4	RA210-063R19-14M	.750	A	2.500	1.969	3.7	1.68	18200	4	R210-140512M-
	14	3/4	.512	.079	.039	3°	1	5	RA210-063R19-14H	.750	A	2.500	1.969	3.7	1.68	18200	5	R210-140512M-
1.945	09	3/4	.315	.047	.071	2°	1	5	RA210-063R19-09M	.750	A	2.500	1.969	2.2	1.68	21700	5	R210-090412M-
2.055	14	1	.512	.079	.039	2°	1	5	RA210-076R25-14M	1.000	A	3.000	1.969	3.7	2.51	15900	5	R210-140512M-
	14	1	.512	.079	.039	2°	1	6	RA210-076R25-14H	1.000	A	3.000	1.969	3.7	2.51	15900	6	R210-140512M-
3.055	14	1 1/2	.512	.079	.079	1°	1	6	RA210-102R38-14M	1.500	B	4.000	2.362	3.7	3.96	13300	6	R210-140512M-
	14	1 1/2	.512	.079	.079	1°	1	7	RA210-102R38-14H	1.500	B	4.000	2.362	3.7	3.96	13300	7	R210-140512M-
4.055	14	1 1/2	.512	.079	.079	1°	1	7	RA210-127R38-14M	1.500	B	5.000	2.480	3.7	5.72	11300	7	R210-140512M-
5.055	14	1 1/2	.512	.079	.079	1°	1	8	RA210-152R38-14M	1.500	B	6.000	2.480	3.7	8.16	10600	8	R210-140512M-

CIS version

										Dimensions							
DC	CZC _{MS}	APMX _{EFW}	APMX _{FFW}	AZ	RMPX	CNSC	Ordering code		DCON	DCX	LF	Nm	Kg	RPMX	CICT	MIID	
56.0	14	1 1/4	13.0	2.0	2.0	2°	1	5	RA210-080J31-14M	31.8	80.0	63.0	5.0	1.14	15400	5	R210-140512M-
65.9	09	1 1/4	8.0	1.2	1.8	1°	1	7	RA210-080J31-09M	31.8	80.0	63.0	3.0	1.14	18800	7	R210-090412M-

