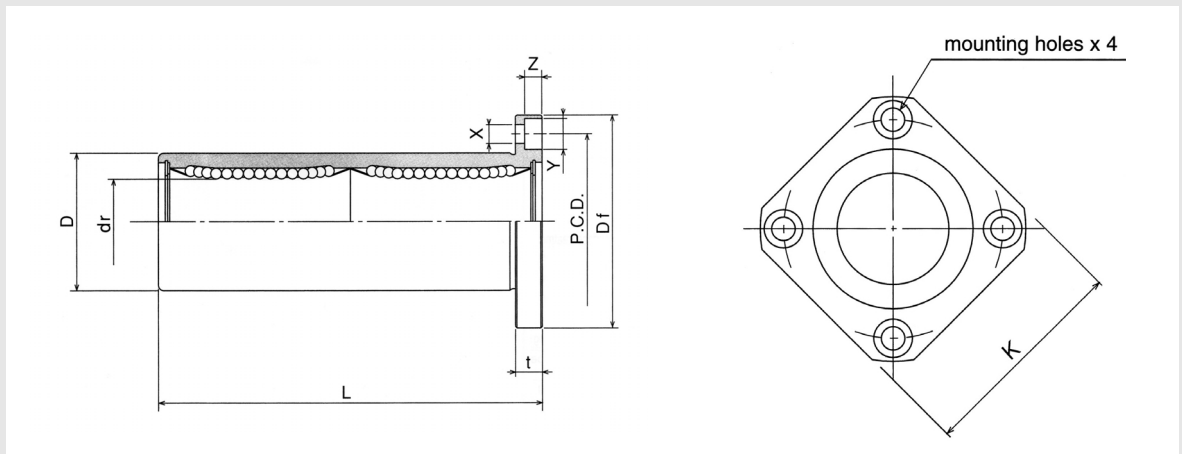


Linear Bushings

Asia type Ball Bushing

SBK-L Flange type



Model number	Number of ball circuits	dr		D		L		Df	K
			Permissible tolerance		Permissible tolerance		Permissible tolerance		
SBK6L	4	6	0 -0.010	12	0 -0.013	35	-0.3	28	22
SBK8L	4	8		15		45		32	25
SBK10L	4	10		19		55		40	30
SBK12L	4	12		21	57	42		32	
SBK13L	4	13		23	61	43		34	
SBK16L	5	16		28	70	48		37	
SBK20L	5	20	0 -0.012	32	0 -0.019	80		54	42
SBK25L	6	25		40		112		62	50
SBK30L	6	30		45		123		74	58
SBK35L	6	35	0 -0.015	52	0 -0.022	135		82	64
SBK40L	6	40		60		154		96	75
SBK50L	6	50	0 -0.020	80	0 -0.025	192		116	92
SBK60L	6	60		90		211	134	106	

① E : Eccentricity (Max)

② S : Squariness

③ C : Basic dynamic load rating

④ Co : Basic static load rating

⑤ M : Mass