

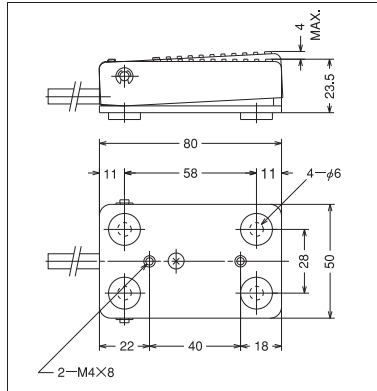
# S5 Series



Many compact faculty switches that responded to electronic digitalization needs of diversification era and thought highly of safety, the credibility and economic efficiency.

## Resin-made mini type

### ● OFL-□-S5:Color Type (Forward fulcrum)

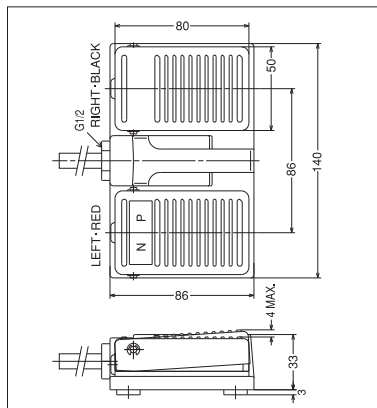


### Features

- Compact design harmonizes to all devices.
- It is made in safe and strong ABS resin and it is safe in pressure operation of 1000 N.
- It can make nameplate (14.5 × 40) display as well of your company for OEM.
- 3 color, red (R) · black (B) · green (G) is standard article.  
Please display a color to model No. end in a symbol.

## Twin Type

### ● OFL-T□-S5 Type

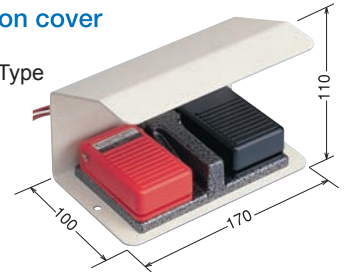


### Major Applications

- This switch is the perfect choice for operating an electromagnetic switching or 2-circuit mechanism.  
Its major applications include medical equipment, general electronic equipment, consumer equipment, sewing equipment, educational equipment, and various electric and industrial equipment.

### With protection cover (Option)

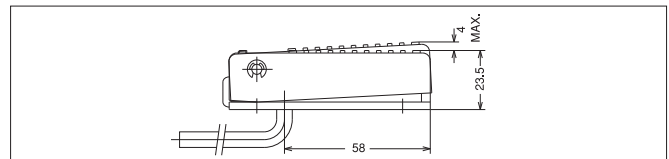
#### ● OFL-T□-S5C Type



## Cord is put out from under

### ● OFL-□-S53:Color Type

- ◆ With the cord led out from under it, the switch permits use as a multi-function mechanism.



## S5 series

Type	Protection Cover		Function	Rating	Switch	Contact	VCTF cord	Operating force N	Weight g (approx.)
	C	CS							
OFL- V -S5 :Color	○	○	●	6A-250VAC	MICRO Switch	1a	0.75mm <sup>2</sup> 2c 1.5m	12 (1.2kgf)	160
OFL- 2V -S5 :Color	○	○	●			2a	0.75mm <sup>2</sup> 4c 1.5m		200
OFL- TV -S5	○	—	● Twin Type			1c for each side	0.75mm <sup>2</sup> 6c 1.5m		700
OFL- VG -S5 :Color	○	○	●	0.1A-30VDC	V (gold clad contact)	1a	0.5mm <sup>2</sup> 2c 1.5m		140
OFL- 2VG -S5 :Color	○	○	●			2a	0.5mm <sup>2</sup> 4c 1.5m		180
OFL- TVG -S5	○	—	● Twin Type			1c for each side	0.5mm <sup>2</sup> 6c 1.5m		630
OFL- V -S53 :Color	—	—	●	6A-250VAC	V	1a	0.75mm <sup>2</sup> 2c 1.5m		160
OFL- 2V -S53 :Color	—	—	●			2a	0.75mm <sup>2</sup> 4c 1.5m	200	

\* If marked ○, the type permits the use of the cover. The protection cover OFL-C weighs 610 g (approx.) while the stainless steel cover (OFL-CS) weighs 1,310 g (approx.). If to be attached, add its weight to the weight of the switch type being used.