

1/4 Speed Reducer

Code No. **1009** Model **RG-01**



30,000 min⁻¹ Max.

- Mounted between an attachment and a motor.
- The speed is reduced to 1/4 while the torque is multiplied by 4 times.
- Suitable for high torque grinding process or drilling.

◆ Weight : 68 g

Standard Accessories

- Pin Wrench (K-233) : 1 pc.

Extension Joint

Code No. **1015** Model **CN-01**



35,000 min⁻¹ Max.

- Speed Ratio 1 : 1
- This is a joint to be connected between a motor and an attachment to extend the total length of the attachment.

◆ Weight : 83 g

Standard Accessories

- Pin Wrench (K-233) : 1 pc.

1/15 Speed Reducer

Code No. **1010** Model **RG-02**



30,000 min⁻¹ Max.

- Mounted between an attachment and a motor.
- The speed is reduced to 1/15 while the torque is multiplied by 15 times.
- Suitable for high torque grinding process or drilling.

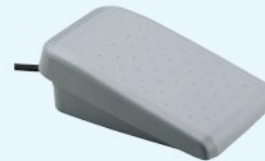
◆ Weight : 93 g

Standard Accessories

- Pin Wrench (K-233) : 1 pc.

Foot Controller

Code No. **8106** Model **FC-64**



- Variable speed control.
- For Emax EVOLution (NE249)

CAUTION

Electric System

Air System

Ultrasonic

General Parts

Exclusive Tools

Emax EVOLution Torque Set

1,000~25,000 min⁻¹



For heavy duty and larger tools, the Torque type promises to expand the range of operation.

Ring Type IR-310 is the standard attachment for Emax EVOLution torque set EV250-120, EV250-230.

Code No. **8234** (120V) Model **EV250-120**

Code No. **8226** (230V) Model **EV250-230**

※Please check the power source plug type (p.4-6).

Standard Equipment

- Micro Grinder (IR-310+ENK-250T) : 1 pc.
- Collet ø3.0 mm (CHH-3.0), ø2.35 mm (CHH-2.35) : 1 pc. each
- Controller (NE249) : 1 pc.
- Accessories : Handpiece Holder : 1 pc., Handpiece Stand : 1 pc., Power Supply Cord : 1 pc., Wrench (7 x 5.1) : 1 pc., Pin Wrench (K-233) : 1 pc., L Shaped Wrench (9) : 1 pc.