

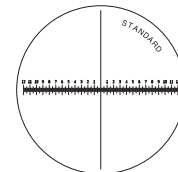


LSL-26

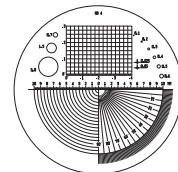


LSL-35

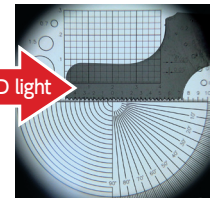
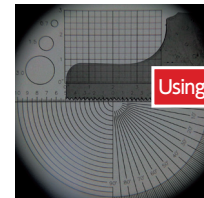
(Scale plate)



STANDARD
(Graduation : 0.1mm)



No. 4



Using LED light

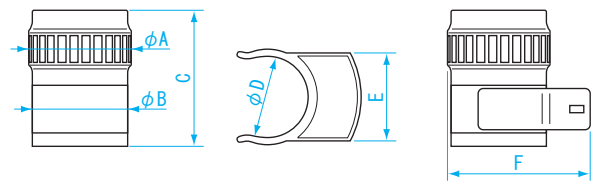
FEATURES

- With LED light to improve visibility for reading scale
- Lens : Glass
- Reticle with full width scale, can be used to measure dimensions and diameter of objects.
- Three LR41 batteries included for testing

ACCESSORIES

- 2 reticles (1 installed)
- 1 eyepiece cap
- 1 cleaning cloth

DIMENSIONS



Unit : mm

Model No.	φA	φB	C (Adjustable)	φD	E	F
LSL-26	37.2	30.6	46.5~55.5	30	30.5	51.5
LSL-35	45	40	45 ~54	39.5	30.5	60

Order No.	Model No.	Magnification	Weight
140141	LSL-26	10 x	45g
140142	LSL-35	10 x	73g

SCALE LOUPE LIGHT



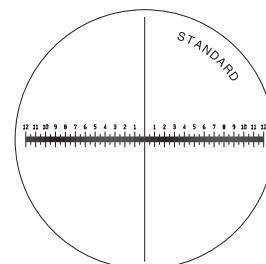
L-26

FEATURES

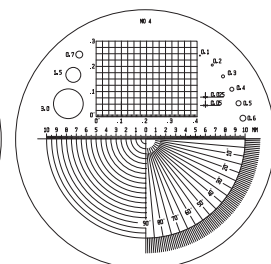
- Accessory light for scale loupe
- Light supplied with lighted scale loupe set (LSL-26, LSL-35) as separate item.

Order No.	Model No.	Weight
140143	L-26	10g
140144	L-35	11g

SCALE PLATE FOR LOUPE



STANDARD
(Graduation: 0.1mm)



No. 4

USE

- Reticle for scale loupe

FEATURES

- Reticle for scale loupe (LSL-26, LSL-35) with pattern shown above.

Order No.	Model No.	Pattern	Applicable Model	Weight
NEW 140146	S-26-4	No.4	LSL-26	3g
NEW 140147	S-26-5	STANDARD	LSL-26	3g
NEW 140148	S-35-4	No.4	LSL-35	4g
NEW 140149	S-35-5	STANDARD	LSL-35	4g

STEREO MICROSCOPE

FIBER SCOPE

TECHNO-ENDOSCOPE

CIRCLE SCOPE

MICRO SCOPE

INSPECTION MIRROR

MAGNIFIER