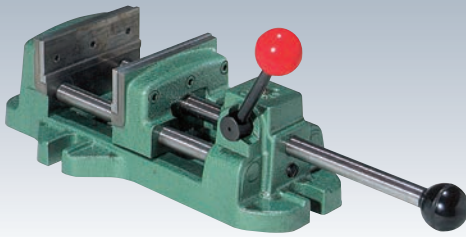
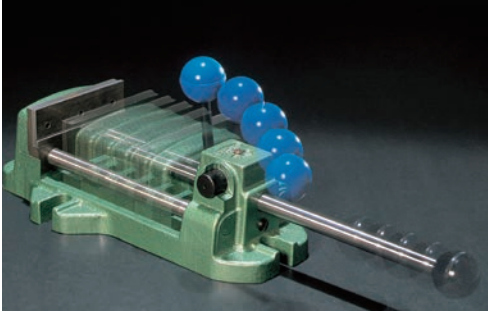


EVS type



EPA type



Speedy opening and closing using the cam lock mechanism!

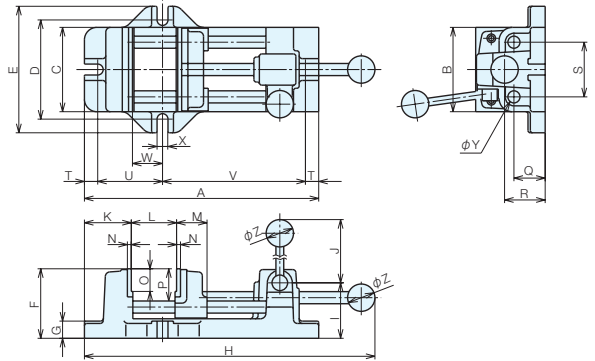
RoHS Compliant



No.E-250

Quick Action Drill Press Vises

- **ERON** Quick Action Drill Press Vises are new types of drilling vises that employ a cam lock mechanism.
- The time taken to clamp the workpiece can be reduced by 50% compared to screw type vises.
- Optimal for drilling machine work.
- The main components are hardened and have a ground finish, offering high accuracy and long life.



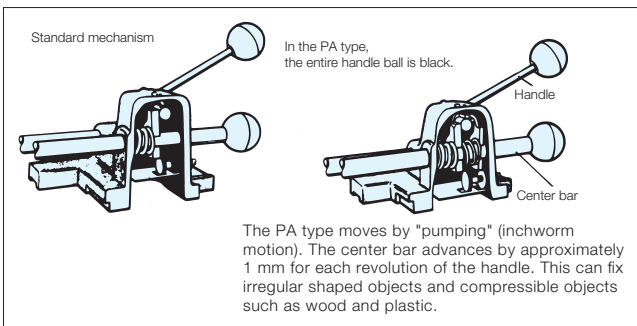
Size Chart

| No. | A | B | C | D | E | F | G | H | I | J | K |
|------------------------|------------|------------|------------|------------|------------|------------|-----------|----------------|-----------|------------|-----------|
| EVS 75-3 (EPA 75-3) | 238 | 82 | 80 | 104 | 122 | 76 | 18 | 277.5-357.5 | 56 | 113 | 48 |
| EVS100-4 (EPA100-4) | 300 | 108 | 108 | 128 | 162 | 89 | 22 | 352-462 | 71 | 113 | 60 |
| EVS150-6 (EPA150-6) | 374 | 156 | 155 | 187 | 225 | 99 | 22 | 433-579 | 80.5 | 124.5 | 73 |
| EVS200-8 | 454 | 207 | 205 | 234 | 274 | 114 | 25 | 407-703 | 95 | 139 | 85 |

| No. | L | M | N | O | P | Q | R | S | T | U | V | W | X | Y | Z |
|------------------------|--------------|-----------|----------|-----------|-------------|-----------|-----------|------------|-----------|------------|------------|-----------|-----------|-----------|-----------|
| EVS 75-3 (EPA 75-3) | 4-78 | 40 | 5 | 19 | 37.75 | 32 | 38 | 56 | 15 | 83 | 130 | 50 | 13 | 12.5 | 35 |
| EVS100-4 (EPA100-4) | 4-120 | 41 | 5 | 29 | 41.25 | 40 | 55 | 70 | 17 | 83 | 182 | 40 | 14 | 15.5 | 35 |
| EVS150-6 (EPA150-6) | 4-160 | 44 | 5 | 29 | 49.5 | 40 | 54 | 108 | 19 | 122 | 221 | 68 | 18 | 19 | 35 |
| EVS200-8 | 4-210 | 51 | 5 | 29 | 51.5 | 50 | 69 | 152 | 22 | 150 | 260 | 87 | 18 | 25 | 40 |

Specifications

| Order No. | No. | Jaw Width | Jaw Depth | Jaw Opening | Pumping | Clamping Force (kN) | Weight (kg) |
|-----------|-----------------|-----------|-----------|-------------|---------|---------------------|-------------|
| 00514 | EVS 75-3 | 82 | 38 | 78 | No | 5 | 4.5 |
| 00515 | EVS100-4 | 108 | 40 | 120 | No | 5 | 8.3 |
| 00516 | EVS150-6 | 156 | 50 | 160 | No | 6.5 | 14.0 |
| 00517 | EVS200-8 | 207 | 50 | 205 | No | 7 | 23.0 |
| 00518 | EPA 75-3 | 82 | 38 | 78 | Yes | 5 | 4.5 |
| 00519 | EPA100-4 | 108 | 40 | 120 | Yes | 5 | 8.3 |
| 00520 | EPA150-6 | 156 | 50 | 160 | Yes | 6.5 | 14.0 |



Reference Pages



Base Elements

Clamp Units

Clamping Parts

Machine Vises

Drilling Vises

Vibration Isolation

Surface Plates and Measurement Instruments

Index