

Can be used with one hand on either left or right side.

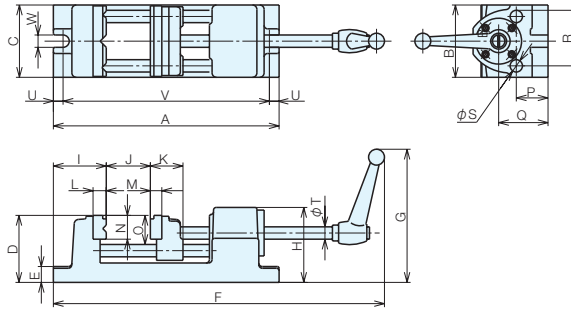
RoHS Compliant



No.E-350

# Uni Lever Action Vises

- Increased efficiency with new mechanism.
- Easily operated using one hand.
- Fitted with custom-made jaw plates, which are useful for clamping round bars, thin parts, etc.
- For use with drilling machines.



### Size Chart

No.	A	B	C	D	E	F	G	H	I	J	K
<b>UTS 75-3</b>	256	80	82	76	18	325.5-405.5	151	85	60	80	37
<b>UTS100-4</b>	313	106	108	89	22	391.5-504.5	140	94	74.5	113	40
<b>UTS125-5</b>	370	131	133	95	24	434.5-569.5	161	103	89	135	47

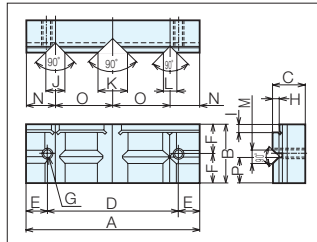
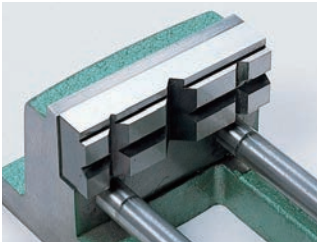
  

No.	L	M	N	O	P	Q	R	S	T	U	V	W
<b>UTS 75-3</b>	15	13	27	33	36	56	56	14	14	11	234	14
<b>UTS100-4</b>	20	16	36	41.25	40	60	70	15.5	15.5	17	279	14
<b>UTS125-5</b>	20	16	36	41.5	41.5	66	85	22	17	19	332	16

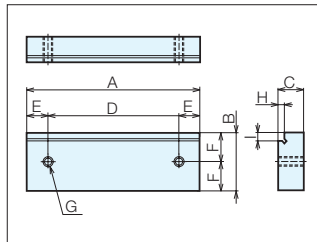
### Specifications

Order No.	No.	Jaw Width	Jaw Depth	Jaw Opening	Clamping Force (kN)	Weight (kg)
<b>03203</b>	<b>UTS 75-3</b>	80	33	80	3.5	5.0
<b>00379</b>	<b>UTS100-4</b>	106	41	113	3.5	9.2
<b>03204</b>	<b>UTS125-5</b>	131	45	135	3.5	14.0

### Stationary Jaw Plate



### Sliding jaw plate



### Jaw Plate Size Chart

No.	A	B	C	D
<b>UTS 75-3</b>	80	27	15	47
<b>UTS100-4</b>	106	36	20	80
<b>UTS125-5</b>	131	36	20	100

E	F	G	H	I	J
16.5	13.5	M5	4	4	10
13	18	M6	4	5	12
15.5	18	M6	4	5	13

K	L	M	N	O	P
14	8	8	10	30	12
18	8	8	18	35	16
20	9	9	20.5	45	16