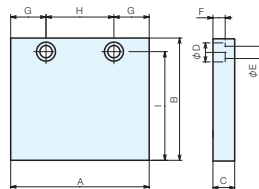
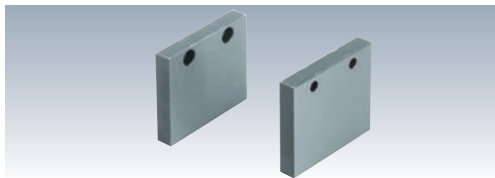


Standard Jaw Plates



Specifications

Order No.	No.	Compatible Vises	A	B	C	D	E	F	G	H	I	Weight (kg)
93023	LT5AU-75JA-60	LT5AU-75	75	60	14	14	9	8.5	21.5	32	50	0.9
88810	LT5AU-100JA	LT5AU-100(M)	102	90	16	14	9	9	26	50	80	1.5

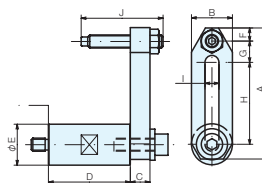
Usage Examples



Locating Workstop



- Set Contents**
- Joint ... 1 piece
 - Clamping G straight 7110G-08 ... 1 piece
 - Flat washer WF8 ... 1 piece
 - Hex bolt M8 × 25 ... 1 piece
 - Hex socket head set screw (dog point) M8 × 50 ... 1 piece
 - Hex nut M8 ... 1 piece



Specifications

Order No.	No.	Compatible Vises	A	B	C	D	E	F	G	H	I	J	Weight (kg)
88811	LT5AU-100WST	LT5AU - All models	80	25	12	50	25	17	13	50	8.5	50	0.4

Base Elements

Clamp Units

Clamping Parts

Machine Vises

Drilling Vises

Vibration
IsolationSurface Plates and
Measurement Instruments

Index