

RoHS Compliant

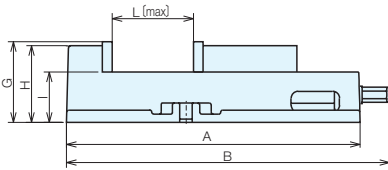
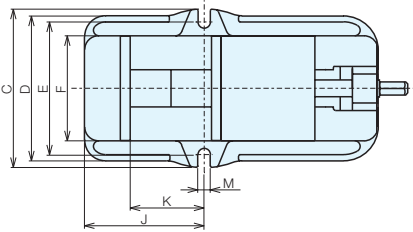


No.E-275L

# Lock-Tight Precision Machine Vises Type L

**Accessories** Standard mounting bolt set (2 pieces per set) compatible T-slot width 18 mm ... 1 set  
 Standard guide block (2 pieces per set) compatible groove width 18 mm ... 1 set  
 Handle ... 1 piece

- The jaw opening is 45% larger than the same type of vise (LT150M).
- The weight is 20% lower than the same type of vise (LT150M), making it easy to carry around.
- The sliding jaw and workpiece are prevented from lifting up by an anti-floating mechanism.
- Made of ductile cast iron, preventing bending and breakage during tightening.
- Sliding surfaces have been flame heat treated (HRC45) and offer excellent wear resistance.
- High accuracy that surpasses the former JIS standards 0 grade.
- Parallel accuracy of matched specification products is within 0.02.



▲ Lock-tight anti-floating mechanism

Base Elements

Clamp Units

Clamping Parts

Machine Vises

Drilling Vises

Vibration Isolation

Surface Plates and Measurement Instruments

Index

## Size Chart

No.	A	B	C	D	E	F	G	H	I	J	K	L	M	N
<b>LT150L</b>	425	468	230	210	192	152	117	111	73	173	107	207	18	19

## Specifications

No.	Jaw Width	Jaw Depth	Jaw Opening	Standard Guide Block Width	Clamping force kN	Weight (kg)	LT-L		LT-LG (Matched Specifications)	
							Order No.	No.	Order No.	No.
<b>LT150L</b>	152	44	207	18	40	29	<b>52056</b>	<b>LT150L</b>	<b>52057</b>	<b>LT150LG</b>

## Accessories and Optional Parts (Refer to the Following Page) Reference Pages

<p>Guide block</p> <p>P.136 ▶</p>	<p>Vise mounting bolt</p> <p>P.134 ▶</p>	<p>Standard jaw plate JA</p> <p>P.137 ▶</p>	<p>Step jaw plate SJ</p> <p>P.137 ▶</p>
<p>Handle</p> <p>P.133 ▶</p>	<p>Rotating Table</p> <p>P.133 ▶</p>		