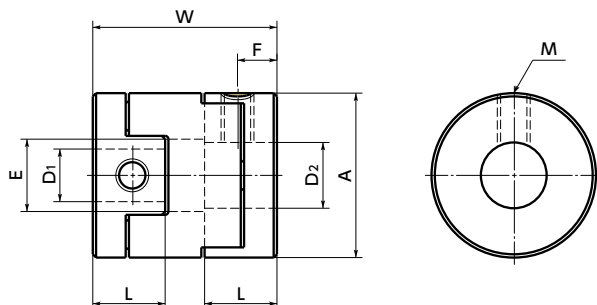
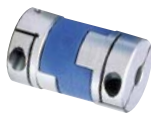


MOL

MOL-C

MOL

Dimensions

Unit : mm

Part Number	A	L	W	E	F	G	M	Screw Tightening Torque (N·m)
MOL-16	16	7	18	7	3.5		M3	0.7
MOL-20	20	9	23	9	4.5		M4	1.7
MOL-25	25	11	28.2	11	5.5		M5	4
MOL-32	32	12.7	32.7	14.5	6.5		M6	7
MOL-40	40	14	32	17	7		M6	7
MOL-50	50	17	38.2	23	8.5		M8	15
MOL-63	63	21	46.6	28	10.5		M10	30
MOL-16C	16	12.5	29	7	3	5	M2.5	1
MOL-20C	20	14.4	33.8	9	3	6.5	M2.5	1
MOL-25C	25	16.5	39.2	11	3.8	9	M3	1.5
MOL-32C	32	18.7	44.7	14.5	4.5	11	M4	2.5
MOL-40C	40	23	50	17	7	13	M5	4
MOL-50C	50	27	58.2	23	8	16	M6	8
MOL-63C	63	33	70.6	28	10	21	M8	16

Part Number	Standard Bore Diameter																
	D1 · D2	3	4	5	6	6.35	8	9.525	10	11	12	14	15	16	18	20	25
MOL-16	●	●	●	●	●	●											
MOL-20		●	●	●	●	●											
MOL-25			●	●	●	●	●										
MOL-32						●			●		●	●					
MOL-40									●		●	●	●	●			
MOL-50											●	●	●	●	●	●	
MOL-63													●	●	●	●	●
MOL-16C			●	●													
MOL-20C				●	●	●											
MOL-25C					●	●			●								
MOL-32C						●			●	●							
MOL-40C										●	●	●					
MOL-50C												●	●	●	●	●	
MOL-63C														●	●	●	●

- All products are provided with hex socket set screw **MOL** or hex socket head cap screw **MOL-C**
- The dimensional allowance for bore diameter of a set screw type **MOL** is H8.
- Recommended dimensional allowances of applicable shaft diameter are h6 and h7.
- A set of hubs with set screw type for one side and clamping type for the other side is available upon request.
- In case of mounting on D-cut shaft, be careful about the position of the D-cut surface of the shaft. → P.257

Additional Keyway at Shaft Hole → P.788

Cleanroom Wash & Packaging → P.792

Change to Stainless Steel Screw → P.790

Available / Add'l charge

Available / Add'l charge

Available / Add'l charge