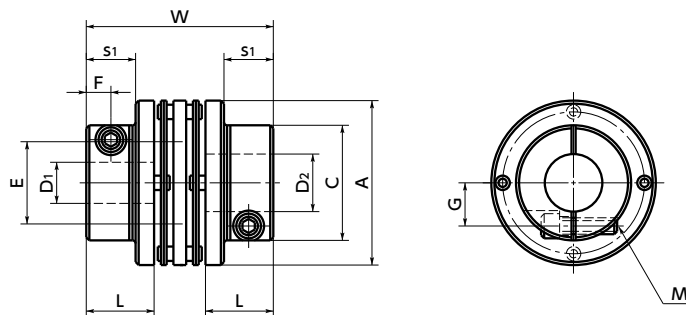


MHW-C



Dimensions

Unit : mm

Part Number 1	A	L	W	C	S1	E	F	G	M	Screw Tightening Torque (N·m)
MHW-32C	32	13.7	40	22	9	15	4	8	M3	1.5
MHW-40C	40	16.5	46	28	12	20	6	10.5	M4	2.5
MHW-50C	50	19.4	52	39	15	25	7	14.75	M5	7
MHW-63C	63	22.3	58	45	18	32	8	17	M6	12

Part Number	Standard Bore Diameter D1 · D2 2											
	6	8	10	11	12	14	15	16	18	19	20	25
MHW-32C	●	●	●									
MHW-40C		●	●	●	●	●						
MHW-50C					●	●	●	●	●	●	●	
MHW-63C							●	●	●	●	●	●

- All products are provided with hex socket head cap screw.
- Recommended dimensional allowances of applicable shaft diameter are h6 and h7.
- In case of mounting on D-cut shaft, be careful about the position of the D-cut surface of the shaft. → P.257

Performance

Part Number	Max. Bore Diameter (mm)	Rated*1 torque (N·m)	Max.*1 torque (N·m)	Max. Rotational Frequency (min ⁻¹)	Moment*2 of Inertia (kg·m ²)	Static Torsional Stiffness (N·m/rad)	Max. Lateral Misalignment (mm)	Max. Angular Misalignment (°)	Max. Axial Misalignment (mm)	Mass*2 (g)
MHW-32C	10	2	4	19000	6.2×10 ⁻⁶	1000	0.15	2	±0.4	48
MHW-40C	14	4	8	15000	1.6×10 ⁻⁵	1500	0.2	2	±0.5	81
MHW-50C	20	7.5	15	12000	4.6×10 ⁻⁵	2000	0.2	2	±0.6	150
MHW-63C	25	10	20	10000	1.1×10 ⁻⁴	2500	0.3	2	±0.8	230

*1 Correction of rated torque and max. torque due to load fluctuation is not required.

*2 These are values with max. bore diameter.

● Related Products

The Double-Disk type Flexible Coupling **XHW** is compatible with the servomotor with 350% instantaneous max. torque is available.

→ P.68



● Part number specification

MHW-32C-8-10

