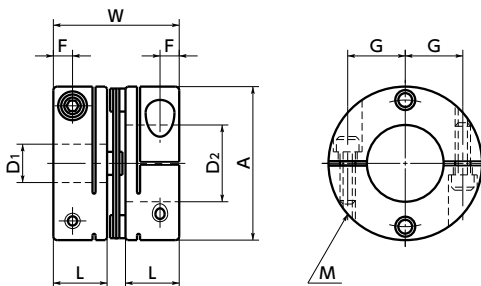


**MDS-C**



**Dimensions**

Unit : mm

Part Number	A	L	W	F	G	M	Screw Tightening Torque (N·m)
<b>MDS-19C</b>	19	8	20	2.5	6.5	M2	0.5
<b>MDS-25C</b>	25	10	24	3.5	9	M2.5	1
<b>MDS-32C</b>	32	12	29	4	11	M3	1.5
<b>MDS-40C</b>	40	14	33	5	15	M4	2.5
<b>MDS-50C</b>	50	18	42	6	18	M5	7
<b>MDS-63C</b>	63	20	46	7	24	M6	12

Part Number	Standard Bore Diameter																						
	D1 · D2																						
	4	5	6	6.35	7	8	9	10	11	12	14	15	16	17	18	19	20	22	24	25	28	30	
<b>MDS-19C</b>	●	●	●		●	●																	
<b>MDS-25C</b>			●	●		●	●	●	●														
<b>MDS-32C</b>						●		●	●	●	●	●											
<b>MDS-40C</b>						●		●	●	●	●	●	●	●	●	●	●						
<b>MDS-50C</b>											●	●	●	●	●	●	●	●	●	●	●		
<b>MDS-63C</b>												●	●	●	●	●	●	●	●	●	●	●	●

- All products are provided with hex socket head cap screw.
- Recommended dimensional allowances of applicable shaft diameter are h6 and h7.
- In case of mounting on D-cut shaft, be careful about the position of the D-cut surface of the shaft. → P.257

**Performance**

Part Number	Max. Bore Diameter (mm)	Rated*1 torque (N·m)	Max.*1 torque (N·m)	Max. Rotational Frequency (min <sup>-1</sup> )	Moment*2 of Inertia (kg·m <sup>2</sup> )	Static Torsional Stiffness (N·m/rad)	Max. Lateral Misalignment (mm)	Max. Angular Misalignment (°)	Max. Axial Misalignment (mm)	Mass*2 (g)
<b>MDS-19C</b>	8	0.7	1.5	33000	6.3 × 10 <sup>-7</sup>	280	0.02	0.7	±0.2	9
<b>MDS-25C</b>	12	1	2	25000	2.1 × 10 <sup>-6</sup>	630	0.02	0.7	±0.2	19
<b>MDS-32C</b>	15	2.5	5	19000	7.2 × 10 <sup>-6</sup>	1600	0.02	0.7	±0.2	41
<b>MDS-40C</b>	20	3.5	7	15000	1.3 × 10 <sup>-5</sup>	2600	0.02	0.7	±0.2	68
<b>MDS-50C</b>	25	9	18	12000	6.1 × 10 <sup>-5</sup>	3100	0.02	0.7	±0.2	140
<b>MDS-63C</b>	30	12.5	25	10000	1.7 × 10 <sup>-4</sup>	4200	0.02	0.7	±0.2	250

\*1 Correction of rated torque and max. torque due to load fluctuation is not required.  
 \*2 These are values with max. bore diameter.

**Related Products**

The Single-Disk type Flexible Coupling **XHS** is compatible with the servomotor with 350% instantaneous max. torque is available.

→ P.74



- Part number specification

**MDS-32C-10-12**

