

FCCA-C / FCCS-C Cross Clamper - Clamping Type

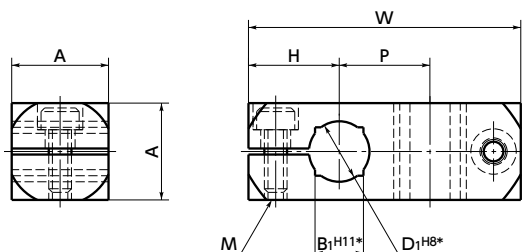
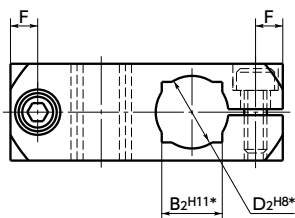
Recommendation



WEB Selection
Tool

WEB CAD
Download

SUS Stainless steel



*Dimensional allowance before slit machining.

Material/Finish

RoHS Compliant

	FCCA-C Made of Aluminum	FCCS-C Made of Stainless Steel
Main body	A6063 Barrel Polishing	SUS304 Barrel Polishing
with Hexagon Socket Bolt	SUSXM7	SUSXM7 Molybdenum Disulfide Coating

- The clamper joints 2 shafts with cross.
- Clamping Type. Mounting shaft and removing shaft are easy. Moreover this does not scratch the shaft.
- Convenient for adjustment of side guide and sensors of the conveyance line.
- Light aluminum and stainless steel with highly corrosion-resistant are standardized.
- Compatible with both round shaft and square shaft.
- All products are provided with hex socket head cap screw.

Unit : mm

Part Number Aluminum	Mass (g)	Part Number Stainless steel	Mass (g)	D1*1	D2*1	B1*1	B2*1	A	W	P	H	F	M (Coarse)
FCCA-8-8-C	9	FCCS-8-8-C	26	8	8			12	32	10	11	4	M3
FCCA-8-10-C	16	FCCS-8-10-C	46	8	10		8	14	40	12	14	4.5	M4
FCCA-10-10-C	15	FCCS-10-10-C	43	10	10	8	8	14	40	12	14	4.5	M4
FCCA-10-12-C	22	FCCS-10-12-C	65	10	12	8	10	16	45	15	15	4.5	M4
FCCA-12-12-C	21	FCCS-12-12-C	61	12	12	10	10	16	45	15	15	4.5	M4
FCCA-10-15-C	39	FCCS-10-15-C	116	10	15	8	12	19	55	19	18	5.5	M5
FCCA-12-15-C	38	FCCS-12-15-C	111	12	15	10	12	19	55	19	18	5.5	M5
FCCA-15-15-C	34	FCCS-15-15-C	102	15	15	12	12	19	55	19	18	5.5	M5
FCCA-12-20-C	77	FCCS-12-20-C	229	12	20	10	16	25	64	24	20	5.5	M5
FCCA-15-20-C	73	FCCS-15-20-C	217	15	20	12	16	25	64	24	20	5.5	M5
FCCA-20-20-C	64	FCCS-20-20-C	190	20	20	16	16	25	64	24	20	5.5	M5

*1 Dimensional allowance before slit machining.

Usage example



- Part number specification

FCCS-10-15-C



Cleanroom Wash & Packaging → P.792	Screw Length Adjustment → P.796	Vibration Resistant → P.795	Laser Marking → P.806
Available / Add'l charge	Not Available	Please feel free to contact us	Available / Add'l charge