

# KNM / KNMS / KNF / KNFS

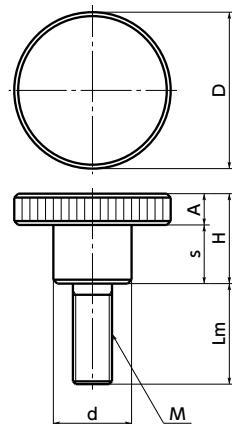
Knurled Knob *Recommendation*

WEB Selection  
Tool

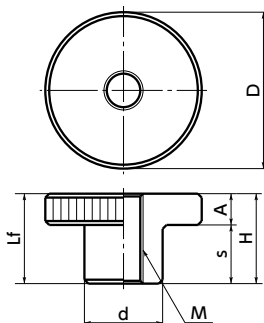
WEB CAD  
Download

SUS Stainless steel

**KNM**  
**KNMS**  
**KNMS-KF**



**KNF**  
**KNFS**  
**KNFS-KF**



- **KNM** has a round-shaped thread tip to be distinguished from **KNMS** **KNMS-KF**.

- A rich variety of thread sizes from M3 to M10 are available.
- There are two types of materials.
  - KNM** **KNF** — Made of steel
  - KNMS** **KNFS** — Made of Stainless Steel
- **KNMS-KF** **KNFS-KF** is antibacterial type. It is highly antibacterial, mold-proof and algae-proof. About antibacterial treatment. → P.266
- Materials and types can be selected by a product code.

Product Code	Material	Type
<b>KNM</b>	Made of Steel	Male Screw
<b>KNF</b>	Made of Steel	Female Screw
<b>KNMS</b>	Made of Stainless Steel	Male Screw
<b>KNFS</b>	Made of Stainless Steel	Female Screw
<b>KNMS-KF</b>	Made of Stainless Steel	Male Screw / Antibacterial Type
<b>KNFS-KF</b>	Made of Stainless Steel	Female Screw / Antibacterial Type

## Material/Finish

RoHS Compliant

	<b>KNM</b>	<b>KNF</b>	<b>KNMS / KNFS</b>	<b>KNMS-KF / KNFS-KF</b>
Main body	SWCH10R Buffing / Chrome Plating	SUM22L Buffing / Chrome Plating	SUS303* Hairline Finish	SUS303 Hairline Finish / Antibacterial

\*For **KNMS-36-M10**, it is SUS304.

## Dimensions

**KNM** **KNMS** **KNMS-KF** Male Screw

Unit : mm

Part Number Steel	Part Number Stainless steel	Part Number Stainless steel / antibacterial treatment type	D <sup>2</sup>	M (coarse) <sup>3</sup>	H	s	A	d	Mass (g)
<b>KNM-12-M3</b>	<b>KNMS-12-M3</b>	<b>KNMS-12-M3-KF</b>	12	M3	7.5	5	2.5	6	3 - 4
<b>KNM-16-M4</b>	<b>KNMS-16-M4</b>	<b>KNMS-16-M4-KF</b>	16	M4	9.5	6	3.5	8	9 - 10
<b>KNM-20-M5</b>	<b>KNMS-20-M5</b>	<b>KNMS-20-M5-KF</b>	20	M5	11.5	7.5	4	10	15 - 16
<b>KNM-24-M6</b>	<b>KNMS-24-M6</b>	<b>KNMS-24-M6-KF</b>	24	M6	15	10	5	12	28 - 32
<b>KNM-30-M8</b>	<b>KNMS-30-M8</b>		30	M8	18	12	6	16	58 - 61
<b>KNM-36-M10</b>	<b>KNMS-36-M10</b>		36	M10	23	15	8	20	108 - 120

**KNF** **KNFS** **KNFS-KF** Female Screw

Unit : mm

Part Number Steel	Part Number Stainless steel	Part Number Stainless steel / antibacterial treatment type	D <sup>2</sup>	M (coarse) <sup>3</sup>	Lf	H	s	A	d	Mass (g)
<b>KNF-12-M3</b>	<b>KNFS-12-M3</b>	<b>KNFS-12-M3-KF</b>	12	M3	7.5	7.5	5	2.5	6	3
<b>KNF-16-M4</b>	<b>KNFS-16-M4</b>	<b>KNFS-16-M4-KF</b>	16	M4	9.5	9.5	6	3.5	8	7
<b>KNF-20-M5</b>	<b>KNFS-20-M5</b>	<b>KNFS-20-M5-KF</b>	20	M5	11.5	11.5	7.5	4	10	13
<b>KNF-24-M6</b>	<b>KNFS-24-M6</b>	<b>KNFS-24-M6-KF</b>	24	M6	15	15	10	5	12	23
<b>KNF-30-M8</b>	<b>KNFS-30-M8</b>	<b>KNFS-30-M8-KF</b>	30	M8	18	18	12	6	16	45
<b>KNF-36-M10</b>	<b>KNFS-36-M10</b>		36	M10	23	23	15	8	20	86

Cleanroom Wash & Packaging → P.792 Screw Combination → P.798 Screw Length Adjustment → P.796 Vibration Resistant → P.795 Laser Marking → P.806  
S.S. only/ Add'l charge Female screw only/ Add'l charge Male screw only/ Add'l charge Male screw only/ Add'l charge S.S. only/ Add'l charge