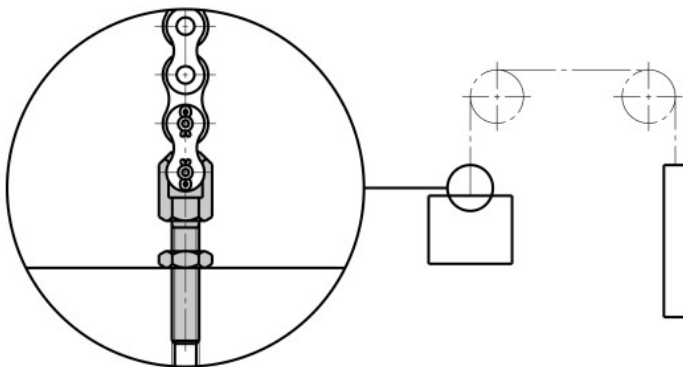


- Usage example
For balance weight connection.



● **Related Products**

Use a turn buckle **STR** **STB** for chain tension adjustment.

STR **STB**



- Wide variations from roller chain nominal diameter No. 11 through 100.
- Right thread or left thread can be selected according to the end symbol of the part number. **S**

SRC-R — Right thread

SRC-L — Left thread

- All products are provided with hexagon nuts (3 types).
- For linkage with a roller chain, a roller chain joint link or offset link is required.

- Material/Finish



	SRC
Main body	S45C (hardness: 35 - 40 HRC) Ferrosoferric Oxide Film (Black)
Nut	SS400 Ferrosoferric Oxide Film (Black)

⚠ Precautions for Use

- If a roller chain bolt is used for a suspension device, implement safety measures to keep people off from beneath the device.
- Roller chain bolts are consumables. Regular inspection and replacement are necessary.
- The max. loads indicated in the dimension table are tensile values.

- Part number specification

SRC-25-18-L

Product Code **1** **2** **3**

🧼 Cleanroom Wash & Packaging
Not Available

🔧 Screw Length Adjustment
Available / Add'l charge

🌀 Vibration Resistant
Available / Add'l charge

🔦 Laser Marking
Not Available