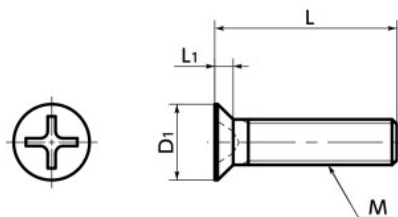


# SNF-SD / SNFS-SD

Cross Recessed Flat Head Machine Screws with Small Head



Small Head **SUS** Stainless steel



- Cross Recessed flat head machine screws with small head diameters. This makes it possible to reduce the spot facing diameters compared to standard flat head machine screws.
- Since the head height is lower than that of standard flat head screws. Suitable for connecting thin plates.

• Application

Reducing the size of equipment and devices

• Material/Finish **1**



	SNF-SD-TZB	SNFS-SD
Main Body	SWCH Trivalent Chromate Treatment	SUSXM7 (Equivalent to SUS304)

**SNF-SD-TZB** Made of Steel - Trivalent Chromate Treatment

Unit : mm

Part Number	M (Coarse)		L <b>3</b>							D1	L1	Cross-recessed Socket Number	Mass (g)	Qty per pack
	Nominal of Thread <b>2</b>	Pitch	5	6	8	10	12	16						
<b>SNF-M3-SD-TZB</b>	M3	0.5	5	6	8	10			5	1.3	1	0.41 - 0.61	20	
<b>SNF-M4-SD-TZB</b>	M4	0.7		6	8	10	12	16	6	1.4	2	0.73 - 1.5	20	
<b>SNF-M5-SD-TZB</b>	M5	0.8			8	10	12	16	8	1.9	2	1.7 - 2.7	20	

• When purchasing less volume than one full bag, a separate handling fee is charged. For details, see the Sold Separately Service.

**SNFS-SD** Made of Stainless Steel

Unit : mm

Part Number	M (Coarse)		L <b>3</b>							D1	L1	Cross-recessed Socket Number	Mass (g)	Qty per pack
	Nominal of Thread <b>2</b>	Pitch	6	8	10	12	16	20	25					
<b>SNFS-M4-SD</b>	M4	0.7	6	8	10	12	16		6	1.4	2	0.73 - 1.5	20	
<b>SNFS-M5-SD</b>	M5	0.8		8	10	12	16	20	8	1.9	2	1.7 - 3.1	20	
<b>SNFS-M6-SD</b>	M6	1			10	12	16	20	10	2.4	3	3.2 - 5.8	20	

• When purchasing less volume than one full bag, a separate handling fee is charged. For details, see the Sold Separately Service.

• Part number specification

**SNF - M5 - 16 - SD - TZB**



<b>1</b> Individual Sales Available / Add'l charge	Cleanroom Wash & Packaging Available / Add'l charge	Screw Length Adjustment Available / Add'l charge	Vibration Resistant Available / Add'l charge	Modification process for captive use Not Available
---	--	---	---	---