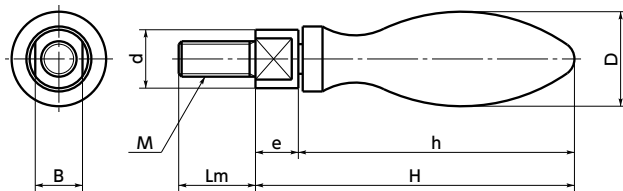


RM Plated Revolving Grip


[WEB Selection Tool](#)
[WEB CAD Download](#)


● Material/Finish

RoHS Compliant

RM	
Grip Part	SS400 Chrome Plating
Thread Part	SS400 Chrome Plating

Unit : mm

Part Number	D	M	Lm	d	H	h	e	B	Mass (g)
RM-6	16	M6	13	10	56	48	8	8	45
RM-8	20	M8	15	13	69	60	9	10	90
RM-10	25	M10	18	16	89	77	12	14	180
RM-12	32	M12	20	20	111	98	13	17	360
RM-16	36	M16	22	22	121	107	14	19	525

● Related Products

Fixing grip **SM** with the same shape is available.

➔ P.416



● Part number specification

RM-6



Cleanroom Wash & Packaging ➔ P.792

Not Available

Vibration Resistant ➔ P.795

Available / Add'l charge

Laser Marking ➔ P.806

Not Available

Modification of Shaft Hole Diameter ➔ P.800

Not Available