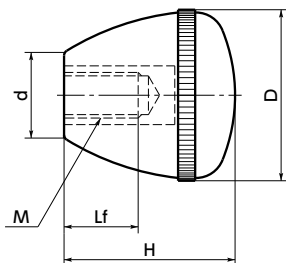


KEC Conical Grip



WEB Selection Tool WEB CAD Download



KEC-RD

KEC-BK

- There are two color variations. They can be selected by the end symbol of the part number.
End Symbol **BK** — Black
End Symbol **RD** — Red

- Material/Finish ✔ RoHS Compliant

| KEC | |
|-------------|-------------------------|
| Grip | Nylon 6 (Various Color) |
| Thread Part | Brass |

Unit : mm

| Part Number | D | M (Coarse) | Lf | d | H | Mass (g) |
|-----------------|----|------------|----|----|----|----------|
| KEC-6-BK | 25 | M6 | 9 | 13 | 25 | 10 |
| KEC-8-BK | 30 | M8 | 13 | 15 | 30 | 18 |
| KEC-8-RD | 30 | M8 | 13 | 15 | 30 | 18 |

- Part number specification

KEC-6-BK



| | | | | |
|------------------------------------|--------------------------------|---------------------------------|-----------------------------|--------------------------|
| Cleanroom Wash & Packaging → P.792 | Screw Combination → P.798 | Screw Length Adjustment → P.796 | Vibration Resistant → P.795 | Laser Marking → P.806 |
| Available / Add'l charge | Please feel free to contact us | Not Available | Not Available | Available / Add'l charge |