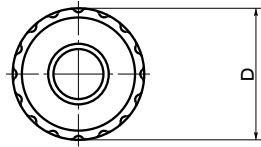
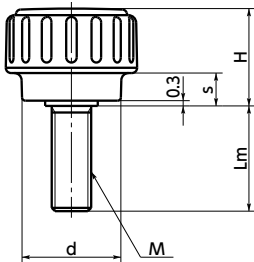
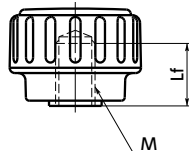


KDM / KDMS / KDF / KDFS Dimple Knob *Recommendation*

WEB Selection
ToolWEB CAD
Download

SUS Stainless steel

KDM
KDMSKDF
KDFSGOOD
DESIGN

Material/Finish

RoHS Compliant

	KDM	KDMS	KDF	KDFS
Knob	Nylon 6 (Matte Black)	Nylon 6 (Various Color)	Nylon 6 (Matte Black)	Nylon 6 (Various Color)
Thread Part	SWCH10R Trivalent Chromate Treatment	SUSXM7	S45C Trivalent Chromate Treatment	SUS303

- High quality. Human design.
- Dimple on the outer circumference enhances the operability.
- A rich variety of thread sizes from M3 to M8 are available.
- Types and thread part materials can be selected by a product code.

Product Code	Type	Thread Part Material
KDM	Male Screw	Made of Steel
KDMS	Male Screw	Made of Stainless Steel
KDF	Female Screw	Made of Steel
KDFS	Female Screw	Made of Stainless Steel

- **KDMS** **KDFS** (made of stainless steel) have two color variations. They can be selected by the end symbol of the part number. **5**

End Symbol **BK** — Matte blackEnd Symbol **WH** — Matte white

- White is optimal for use with medical equipment.

Dimensions

KDM KDMS Male Screw

Unit : mm

Part Number Steel	Part Number Stainless steel	D 2	M (coarse) 3	H	s	d	Mass (g)
KDM-16-M3	KDMS-16-M3	16	M3	11	2	11	3 - 4
KDM-16-M4	KDMS-16-M4	16	M4	11	2	11	3 - 4
KDM-16-M5	KDMS-16-M5	16	M5	11	2	11	5 - 6
KDM-20-M5	KDMS-20-M5	20	M5	14	4	15	5 - 8
KDM-20-M6	KDMS-20-M6	20	M6	14	4	15	8 - 11
KDM-25-M5	KDMS-25-M5	25	M5	18	6	19	8 - 10
KDM-25-M6	KDMS-25-M6	25	M6	18	6	19	9 - 13
KDM-25-M8	KDMS-25-M8	25	M8	18	6	19	16 - 20
KDM-32-M6	KDMS-32-M6	32	M6	18	6	24	17 - 19
KDM-32-M8	KDMS-32-M8	32	M8	18	6	24	23 - 32

KDF KDFS Female Screw

Unit : mm

Part Number Steel	Part Number Stainless steel	D 2	M (coarse) 3	Lf	H	s	d	Mass (g)
KDF-16-M3	KDFS-16-M3	16	M3	5	11	2	11	4
KDF-16-M4	KDFS-16-M4	16	M4	5	11	2	11	4
KDF-16-M5	KDFS-16-M5	16	M5	5	11	2	11	4
KDF-20-M5	KDFS-20-M5	20	M5	6	14	4	15	7
KDF-20-M6	KDFS-20-M6	20	M6	6	14	4	15	6
	KDFS-25-M5	25	M5	9	18	6	19	11
KDF-25-M6	KDFS-25-M6	25	M6	9	18	6	19	10
KDF-32-M6	KDFS-32-M6	32	M6	8	18	6	24	18
KDF-32-M8	KDFS-32-M8	32	M8	8	18	6	24	17

Cleanroom Wash & Packaging → P.792 Screw Combination → P.798 Screw Length Adjustment → P.796 Vibration Resistant → P.795 Laser Marking → P.806
 S.S. only/ Add'l charge Female screw only/ Add'l charge Male screw only/ Add'l charge Male screw only/ Add'l charge Available / Add'l charge