

CONVUM Specifications

Description \ Model number	Unit	CV-05		CV-10			CV-15			CV-20			CV-25		CV-30A	
		HS	LS	HS	LS	HR	HS	LS	HR	HS	LS	HR	HS	LS	HS	LS
Nozzle size	mm	0.5		1.0			1.5			2.0			2.5		3.0	
Fluid		Non-lubricated compressed air														
Ambient temperature	°C	0~60(No Freezing)														
Operating pressure range	MPa	0.1~0.6														
Rated pressure	MPa	0.5		0.35			0.5			0.5			0.35		0.5	
Maximum vacuum pressure	kPa	-87	-57	-92	-57	-91	-92	-57	-91	-92	-57	-91	-92	-57	-92	-57
Suction flow	L/min(ANR)	6	9	27	36	25	63	95	54	110	155	88	160	250	225	350
Air consumption	L/min(ANR)	13		44			100			180			265		385	

Switch Specifications

Description \ Model number	Unit	CV-CK	
Fluid		Air	
Operating pressure range	kPa	-20~-53	
Withstand pressure	MPa	0.5	
Ambient temperature range	°C	0~60 (No freezing)	
Ambient humidity range	%RH	35~85 (No condensation)	
Switch type		Reed switch, normally opened (N.O)	
Rated voltage	V	AC125, 250	
Maximum load current	AC125	A	5
	AC250	A	3
Repeatability	kPa	±5.3	
Hysteresis	kPa	4.0~13.3	
Cable length	mm	100	

Silencer Specifications

Description \ Model number	Unit	MSS-01	MSM-01	MSL-02	MS6-01
Fluid		Non-lubricated compressed air			
Ambient temperature range	°C	0~60 (No freezing)			
Operating pressure range	MPa	0~0.5			
Port size		G1/8	G1/4	R1/2	G3/4
Noise reduction	dB	More than 20			
Applicable CONVUM		CV-05,10	CV-15	CV-20	CV-25,30A

Weight (g) CONVUM Body (with silencer, without switch)

Material	Nozzle size					
	05	10	15	20	25	30A
Aluminum	78	139	343	730	870	
SUS	-	189	334	793	-	-
PTFE	-	66	116	295	-	-

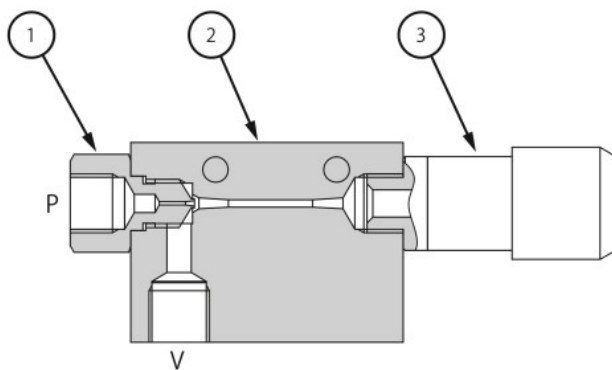
Pressure Switch (with cable)

Nozzle size	05	10	15	20
Weight	40	40	50	110

Silencer

Model number	Weight
MSS-01	5
MSM-01	7
MSL-02	25
MS6-01	54

Construction

Component Parts
Aluminum Body

No.	Parts name	Material
1	Supply port	Brass
2	Body	Aluminum
3	Silencer	POM, felt

SUS Body

No.	Parts name	Material
1	Supply port	SUS
2	Body	SUS
3	Silencer	POM, felt

PTFE Body

No.	Parts name	Material
1	Supply port	SUS
2	Body	PTFE
3	Silencer	POM, felt

Symbol

