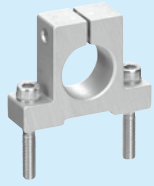


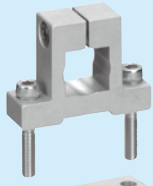
Adjusting center level

The type 600 of each form



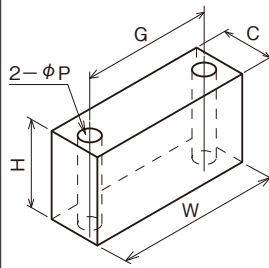
UBS10

The type USQ600



UBS20

Base



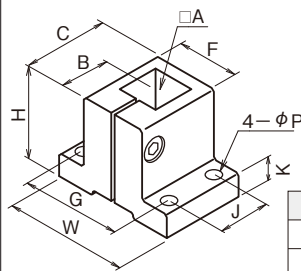
SUS 304	G	2-φP	W	C	H	Cap screw
UBS1012	30	φ4.5	38	12	10	M4×25 L
UBS2012					20	M4×35 L
UBS1015	38	φ5.5	48	15 (16)	10	M5×30 L
UBS2016					20	M5×40 L
UBS1020	42	φ5.5	52	20	10	M5×30 L
UBS2020					20	M5×40 L

USQ-601

for fixing strut edge



Vertical-Rectangular



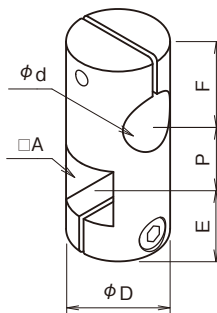
SUS 304	□A	B	C	H	K	F	W	G	J	4-φP	Cap screw
USQ10-601	□10	14.5	24	28	7	20	38	30	14	φ4.5	M4
USQ12-601	□12	16	26	28	7	20	38	30	16	φ4.5	M4
USQ13-601	□13	16	26	28	7	20	38	30	16	φ4.5	M4
USQ16-601	□16	19	32	36	9	26	48	38	20	φ5.5	M5
USQ19-601	□19	21	36	40	10	30	52	42	20	φ5.5	M5
USQ20-601	□20	21	36	40	10	30	52	42	20	φ5.5	M5

USH-200

to fix Rect-shaft rotate a round shaft



Rect-round type

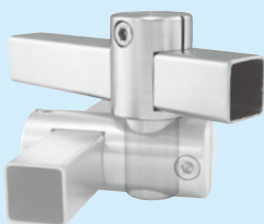


SUS 304	□A	φd	φD	E	P	F	Cap screw
USH1009-200	□10	φ9	φ19	14.5	13	14.5	M4
USH10-200		φ10					
USH1210-200	□12	φ10	φ22	15.5	15	15.5	M4
USH12-200		φ12					
USH1310-200	□13	φ10	φ22	15.5	15	15.5	M4
USH1312-200		φ12					
USH13-200	□13	φ13	φ22	15.5	15	15.5	M4
USH16-200		φ16					
USH1916-200	□19	φ16	φ29	21.5	24	21.5	M5
USH19-200★		φ19.1					
USH2019-200★	□20	φ19.1	φ29	21.5	24	21.5	M5
USH20-200		φ20					

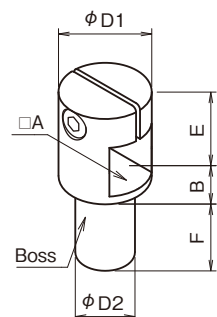
★ = φd tolerance is 0 / -0.05

USH-204

to insert boss and make it arbitrarily-angle



Rect-boss type



SUS 304	□A	φD2	φD1	E	B	F	Cap screw
USH1009-204	□10	φ9	φ19	14.5	8	19	M4
USH10-204		φ10					
USH1210-204	□12	φ10	φ22	15.5	9	22	M4
USH12-204		φ12					
USH1310-204	□13	φ10	φ22	15.5	9	22	M4
USH1312-204		φ12					
USH13-204	□13	φ13	φ22	15.5	9	22	M4
USH16-204		φ16					
USH1916-204	□19	φ16	φ29	21.5	13.5	30	M5
USH19-204		φ19					
USH2019-204	□20	φ19	φ29	21.5	13.5	30	M5
USH20-204		φ20					

Page88 Also can be combined with the round hole pijon