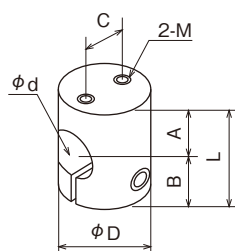


223~228

for parts or board attachment



Screw tapped



SUS 303	ϕd	ϕD	L	A	B	C	2-M	Cap screw
PE3S223	8	15	24	11	13	9	M3	M4
PC3S223	9	15	25	12	13	9	M3	M4
PF3S223	10	15	26	12	14	9	M3	M4
PG3S223	12	22	28	14	14	9	M3	M4
PJ3S223	13	22	28	14	14	9	M3	M4

SUS 304	ϕd	ϕD	L	A	B	C	2-M	Cap screw
PE4S223	8	15	24	11	13	9	M3	M4
PC4S223	9	15	25	12	13	9	M3	M4
PF4S223	10	15	26	12	14	9	M3	M4
PG4S223	12	22	28	14	14	9	M3	M4
PJ4S223	13	22	28	14	14	9	M3	M4

SUS 303	ϕd	ϕD	L	A	B	C	2-M	Cap screw
PG3S224	12	22	28	14	14	10	M4	M4
PJ3S224	13	22	28	14	14	10	M4	M4
PN3S224	16	25	36	18	18	13	M4	M5

SUS 304	ϕd	ϕD	L	A	B	C	2-M	Cap screw
PG4S224	12	22	28	14	14	10	M4	M4
PJ4S224	13	22	28	14	14	10	M4	M4
PN4S224	16	25	36	18	18	13	M4	M5

SUS 303	ϕd	ϕD	L	A	B	C	2-M	Cap screw
PJ3S225	13	22	28	14	14	10	M5	M4
PN3S225	16	25	36	18	18	13	M5	M5
PL3S225★	19.1	30	43	23	20	15	M5	M5
PQ3S225	20	30	43	23	20	15	M5	M5

SUS 304	ϕd	ϕD	L	A	B	C	2-M	Cap screw
PG4S225	12	22	28	14	14	10	M5	M4
PJ4S225	13	22	28	14	14	10	M5	M4
PN4S225	16	25	36	18	18	13	M5	M5
PL4S225★	19.1	30	43	23	20	15	M5	M5
PQ4S225	20	30	43	23	20	15	M5	M5

SUS 303	ϕd	ϕD	L	A	B	C	2-M	Cap screw
PN3S226	16	25	36	18	18	13	M6	M5
PL3S226★	19.1	30	43	23	20	15	M6	M5
PQ3S226	20	30	43	23	20	15	M6	M5

SUS 304	ϕd	ϕD	L	A	B	C	2-M	Cap screw
PN4S226	16	25	36	18	18	13	M6	M5
PL4S226★	19.1	30	43	23	20	15	M6	M5
PQ4S226	20	30	43	23	20	15	M6	M5

SUS 303	ϕd	ϕD	L	A	B	C	2-M	Cap screw
PL3S228★	19.1	30	43	23	20	15	M8	M5
PQ3S228	20	30	43	23	20	15	M8	M5

SUS 304	ϕd	ϕD	L	A	B	C	2-M	Cap screw
PL4S228★	19.1	30	43	23	20	15	M8	M5
PQ4S228	20	30	43	23	20	15	M8	M5

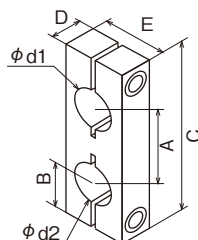
★ = ϕd tolerance is 0 / -0.05

290

parts attached on a shaft can be rotatable, supported by the other shaft

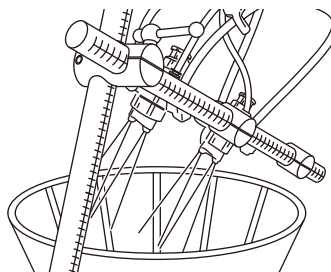


Two parallel shafts



SUS 304	$\phi d1$	$\phi d2$	A	B	C	D	E	Cap screw
PE4S290	8	8	20	12.5	45	12	19	M4
PC4S290	9	9	20	13	46	12	19	M4
PF4S290	10	10	20	13.5	47	12	19	M4
PG4S290	12	12	22	14	50	16	25	M4
PJ4S290	13	13	22	14	50	16	25	M4
PN4S290	16	16	26	18.5	63	16	25	M5
PL4S290★	19.05	19.05	30	20	70	16	32	M5
PQ4S290	20	20	30	20	70	16	32	M5

★ = $\phi d1, \phi d2$ tolerance is 0 / +0.021



It is used for a positioning of an atomizing mouth of tablet coating.

An atomizing mouth is fixed with PIJON and a positioning is performed with a graduated pipe.