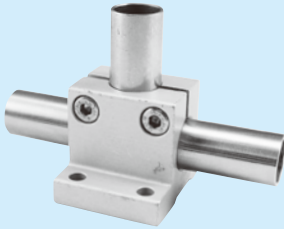


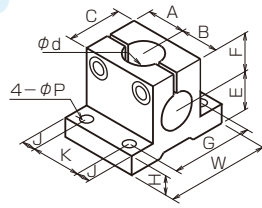
When you use the parts for a clockwise and anticlockwise rotation as a pair, it is easy to clamp a screw.

610

for vertical/lateral shaft attachment



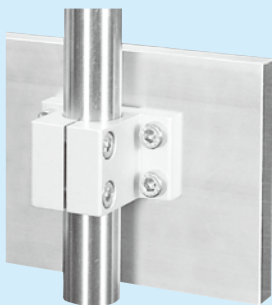
Vertical-horizontal T shape



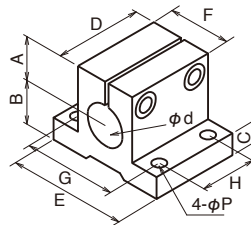
	ϕd	E	F	A	B	C	H	G	W	J	K	ϕP	Cap screw
P3-610	$\phi 3$	5	5	5.5	5.5	5	2.5	10	14	2.5	6	4- $\phi 2.1$	2-M2
PE 610	$\phi 8$	11	11.5	11.5	11.5	16	6.5	24	32	4.5	14	4- $\phi 4.2$	2-M4
PC 610	$\phi 9$			12.5	12.5								
PF 610	$\phi 10$	14	14	14	14	20	7	30	38	5	18	4- $\phi 4.2$	2-M4
PG 610	$\phi 12$			14	14								
PJ 610	$\phi 13$	18	18	17	17	26	9	38	48	6	22	4- $\phi 5.2$	2-M5
PK 610	$\phi 15$			19	19								
PN 610	$\phi 16$			19	19								
PL 610	$\phi 19.1$	20	20	22.5	22.5	30	10	42	52	6	33	4- $\phi 5.2$	2-M5
PQ 610	$\phi 20$			22.5	22.5								

620

Standardization of a normal type 600 and a slotted hole type



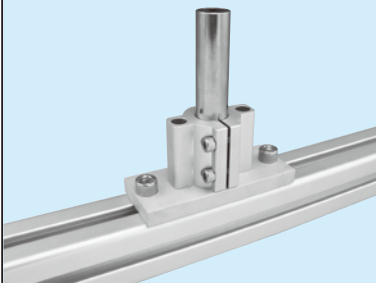
Type of installation on the side surface



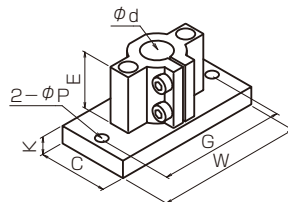
	ϕd	A	B	C	D	E	F	G	H	4- ϕP	Cap screw
PS620	$\phi 6$	9	9	5	16	26	12	20	8	$\phi 3.3$	2-M3
PE620	$\phi 8$	11.5	11	6.5	20	32	16	24	10	$\phi 4.2$	2-M4
PC620	$\phi 9$										
PF620	$\phi 10$	14	14	7	24	38	20	30	14	$\phi 5.2$	2-M5
PG620	$\phi 12$										
PJ620	$\phi 13$	18	18	9	28	48	26	38	16	$\phi 5.2$	2-M5
PK620	$\phi 15$										
PN620	$\phi 16$										
PL620	$\phi 19.1$	20	20	10	28	52	30	42	$\phi 5.2$	2-M5	
PQ620	$\phi 20$										

612

to fix by screw even on aluminum frame



Vertical hole with plate

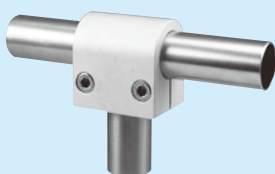


We have a guiding dowel.
For details, please refer to page 3.

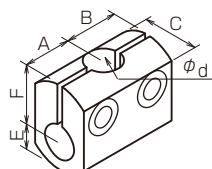
	ϕd	E	C	W	K	G	2- ϕP	Cap screw
PJ612	$\phi 13$	26	30	70	8	60	$\phi 5.5$	2-M4
PN612	$\phi 16$	32	40	85	10	73	$\phi 6.5$	2-M5
PL612	$\phi 19.1$	40	40	100	10	85	$\phi 8.5$	

722

or frame support or T-shape attachment



Vertical-horizontal hole



	ϕd	E	F	A	B	C	Cap screw
PS722	$\phi 6$	5	10	9	9	10	2-M3
PL722	$\phi 19.1$	14	24	19	19	28	2-M5