

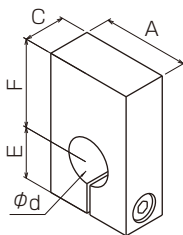
When you use the parts for a clockwise and anticlockwise rotation as a pair, it is easy to clamp a screw.

**530**

The processing of the tapped hole for fixing of a part can be performed freely.



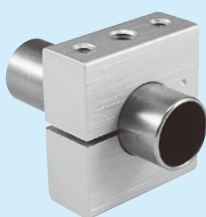
**Blank**



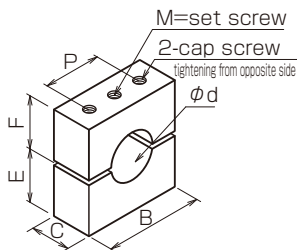
	$\phi d$	E	F	A	C	Cap screw
◎ PC530	$\phi 9$	13	25	20	10	M4
◎ PF530	$\phi 10$					
◎ PG530	$\phi 12$					
◎ PJ530	$\phi 13$	15	25	25	12	
◎ PK530	$\phi 15$					
◎ PN530	$\phi 16$					
◎ PL530	$\phi 19.1$	20	38	30	15	M5
◎ PQ530	$\phi 20$					

**513~518**

for parts or board attachment (capable of later attachment)



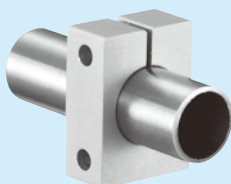
**Screw tapped split type**



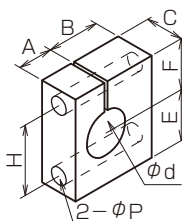
	$\phi d$	M	E	F	B	C	P	Cap screw
PF513	$\phi 10$	M3	11	14	26	10	16	2-M4
PF514		M4						
PF515		M5						
PF516		M6						
PG513	$\phi 12$	M3	12	17	29	11	19	2-M4
PG514		M4						
PG515		M5						
PG516		M6						
◎ PK513	$\phi 15$	M3	16	22	38	14	26	2-M5
◎ PK514		M4						
◎ PK515		M5						
◎ PK516		M6						
◎ PN514	$\phi 16$	M4	16	22	38	14	26	2-M5
◎ PN515		M5						
◎ PN516		M6						
◎ PN518		M8						
◎ PQ513	$\phi 20$	M5	16	22	40	14	28	2-M5
◎ PQ514		M6						
◎ PQ515		M8						

**508,708**

or fixing by 2- $\phi p$  with shaft



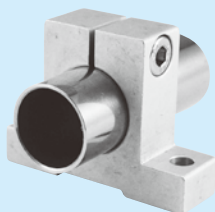
**Wall fixing**



	$\phi d$	E	F	A	B	C	H	2- $\phi P$
PJ508	$\phi 13$	14.5	14.5	10	15	11	19	$\phi 5.0$
PL708	$\phi 19.1$	19	19	14	14	14	26	$\phi 5.2$

**600**

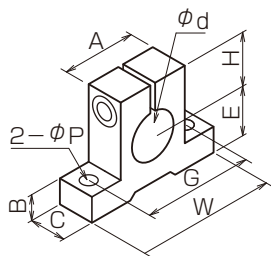
to raise horizontal and vertical shaft



PH600

The type PH 600 is different shape.

**Horizontal hole**



	$\phi d$	C	B	E	H	A	W	G	2- $\phi P$	Cap screw
P3-600	$\phi 3$	5	2.5	5	5	5	14	10	$\phi 2.1$	M2
PS600	$\phi 6$	8	5	9	9	12	26	20	$\phi 3.3$	M3
PE600	$\phi 8$	10	6.5	11	11.5	16	32	24	$\phi 4.2$	M4
PC600	$\phi 9$									
PF600	$\phi 10$	12	7	14	14	20	38	30	$\phi 4.2$	M4
PG600	$\phi 12$									
PJ600	$\phi 13$									
PK600	$\phi 15$									
PN600	$\phi 16$	14	9	18	18	26	48	38	$\phi 5.2$	M5
PL600	$\phi 19.1$									
PQ600	$\phi 20$	10	20	20	30	52	42			
PH600	$\phi 25.1$	17	10	20	23	37	64	50	$\phi 6.5$	M5
PR600	$\phi 30$	20	12	40	35	50	90	70	$\phi 8.5$	M6
PT600	$\phi 32$									
PU600	$\phi 35$									M8

Dimensional drawing (for equipment-related) A type with a straight bore size