
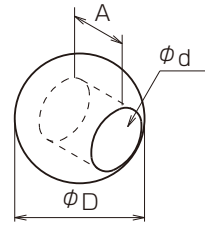


When you use the parts for a clockwise and anticlockwise rotation as a pair, it is easy to clamp a screw.

255
for attachment on the shaft edge

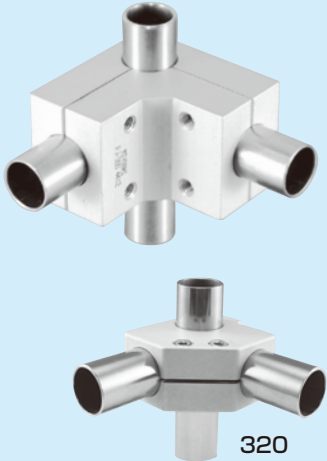


Decorating ball



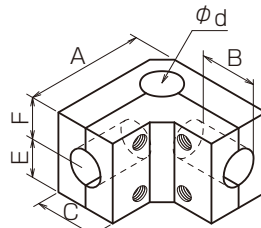
	ϕd	ϕD	A
PS255	$\phi 6$	$\phi 13$	9
PE255	$\phi 8$	$\phi 13$	8
PC255	$\phi 9$	$\phi 15$	11
PF255	$\phi 10$	$\phi 15$	9
PG255	$\phi 12$	$\phi 20$	13
PJ255	$\phi 13$	$\phi 22$	14
PK255	$\phi 15$	$\phi 23$	13
PN255	$\phi 16$	$\phi 24$	14
PL255	$\phi 19.1$	$\phi 29$	17
PQ255	$\phi 20$	$\phi 29$	16

300
to set the corner of frame assembly

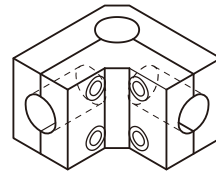


320
The type 320 is different shape.

For corner



External tightening



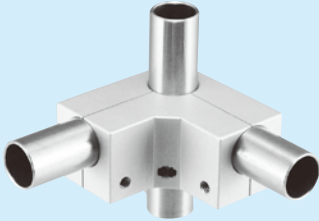
Internal tightening

Please note that the tightening direction of screws is different.

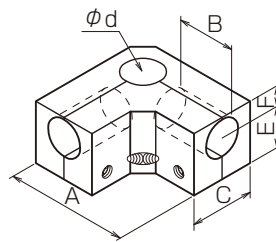
External tightening	Internal tightening	ϕd	E	F	A	C	B	Cap screw
PS300	-	$\phi 6$	9	9	23	11	11	4-M3
PE300	-	$\phi 8$	12	12	26	16	11	4-M4
PC300	PC301	$\phi 9$						
PF300	-	$\phi 10$	12.5	12.5	26	16	9	4-M5
PG300	-	$\phi 12$	14	14	42	22	20	
PJ300	PJ301	$\phi 13$	17.5	17.5	42	28	20.5	4-M5
PK300	-	$\phi 15$					20	
PN300	-	$\phi 16$	19	19	42	28	18.5	4-M5
PL300	PL301	$\phi 19.1$	19	19	42	28	18.5	
PQ300	-	$\phi 20$	20	20	42	28	18	

from left	from right	ϕd	E	F	A	A'	C	B	Cap screw
PH320	PH321	$\phi 25.1$	17	17	63	57	32	26	2-M5

305
to be nearly flat for pipe and clamp top

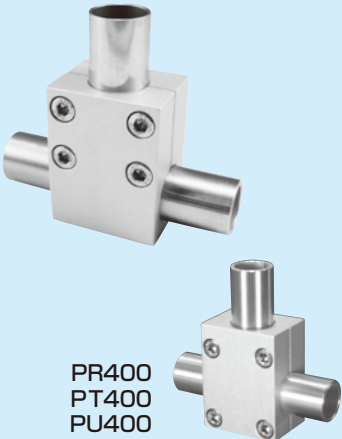


Low-profile corner for External tightening



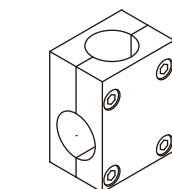
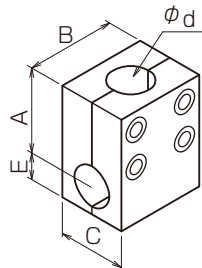
Low-profile external	ϕd	E	F	A	C	B	Cap screw
PS305	$\phi 6$	9	4	23	11	11	4-M3
PJ305	$\phi 13$	14	7	42	22	20	4-M4

400
to tuck without disassembling frame (capable of later attachment)



PR400
PT400
PU400

Split T



(PR400~PU400)

	ϕd	C	E	A	B	Cap screw
PS400	$\phi 6$	11	4	18	18	4-M3
PE400	$\phi 8$	16	5	26	25	4-M4
PC400	$\phi 9$		6	24	24	
PF400	$\phi 10$		25	25		
PG400	$\phi 12$	22	9	27	29	4-M5
PJ400	$\phi 13$					
PK400	$\phi 15$	24	10	32	34	4-M5
PN400	$\phi 16$					
PL400	$\phi 19.1$	28	13	37	38	4-M6
PQ400	$\phi 20$					
PH400	$\phi 25.1$	36	14	51	53	4-M6
PR400	$\phi 30$	44	30	50	60	
PT400	$\phi 32$					4-M8
PU400	$\phi 35$	50	31	59	70	

Dimensional drawing (for equipment-related)
A type with a straight bore size