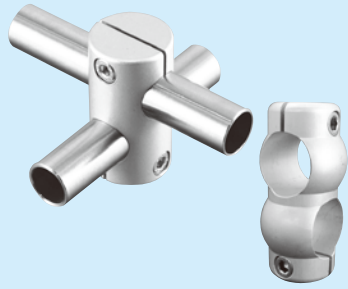


Dimensional drawing of PIJON 《Introducing the group which is used very often for the equipment-related》

When you use the parts for a clockwise and anticlockwise rotation as a pair, it is easy to clamp a screw.

100, 200

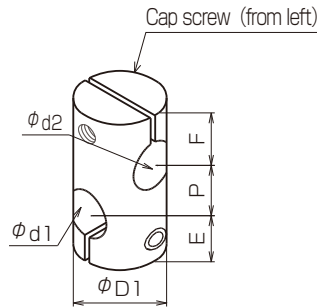
for right-angle shaft attachment



100

The type 100 is different shape.

Cross 90° hole



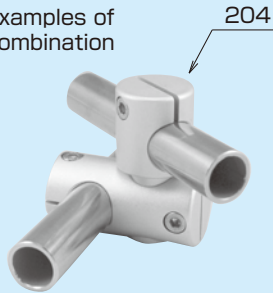
*Please note that the tightening direction of screws is different.

from left	from right	φ d1	φ d2	φ D1	E	P	F	Cap screw
P3-100	P3-101	φ 3	φ 3	φ 6	5	4	5	2-M2
PS200	PS201	φ 6	φ 6	φ 13	9	7	9	2-M3
PE200	-	φ 8	φ 8	φ 15	12	10	12	2-M4
PC200	PC201	φ 9	φ 9		13	11	13	
PF200	-	φ 10	φ 10	φ 22	14	14	14	2-M4
PG200	-	φ 12	φ 12		14	14	14	
PJ200	PJ 201	φ 13	φ 13	φ 25	17.5	18	17.5	2-M5
PK200	-	φ 15	φ 15		17.5	18	17.5	
PN200	-	φ 16	φ 16	φ 29	19	21	19	2-M5
PL200	PL201	φ 19.1	φ 19.1		20	20	20	
PQ200	-	φ 20	φ 20	φ 37	24	27	24	2-M6
PH100	PH101	φ 25.1	φ 25.1		24	27	24	
PR100	-	φ 30	φ 30	φ 45	29	32	29	2-M6
PT100	-	φ 32	φ 32	φ 48	31	34	34	
PU100	-	φ 35	φ 35	φ 52	36	40	36	2-M8

104, 204

for free assembly with other parts

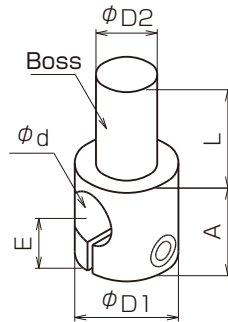
Examples of combination



104

The type 104 is different shape.

One-sided boss



	φ d	φ D1	φ D2	E	A	Boss length L	Cap screw
P3-104	φ 3	φ 6	φ 3	5	8	7	M2
PS204	φ 6	φ 13	φ 6	9	14	14	M3
PS204M						25	
PE204	φ 8	φ 15	φ 8	12	19	16	M4
PE204M						25	
PC204	φ 9	φ 15	φ 9	12	19	16	M4
PC204M						30	
PF204	φ 10	φ 15	φ 10	13	20	17	M4
PF204M						30	
PG204	φ 12	φ 22	φ 12	14	23	23	M4
PG204M						45	
PJ204	φ 13	φ 22	φ 13	14	23	23	M4
PJ204M						45	
PK204	φ 15	φ 25	φ 15	18	29	25	M5
PK204M						50	
PN204	φ 16	φ 25	φ 16	18	29	25	M5
PN204M						50	
PL204	φ 19.1	φ 29	φ 19	19	31	30	M5
PL204M						50	
PL204L						100	
PQ204	φ 20	φ 29	φ 20	20	33	30	M5
PQ204M						60	
PQ204L						100	
PH104	φ 25.1	φ 37	φ 25	24	39	40	M6
PH104M						70	
PH104L						100	
PR104	φ 30	φ 45	φ 30	29	48	50	M6
PT104	φ 32	φ 48	φ 32	31	51	50	M6
PU104	φ 35	φ 52	φ 35	36	58	55	M8

109, 209

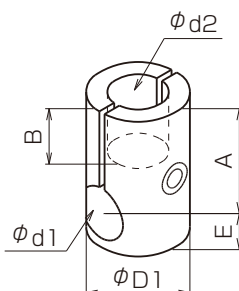
for frame support or T-shape attachment. (stuck at φd2 bottom)



109

The type 109 is different shape.

Vertical-horizontal hole



	φ d1	φ d2	φ D1	E	A	B	Cap screw
P3-109	φ 3	φ 3	φ 6	3	8.5	4	M2
PS209	φ 6	φ 6	φ 13	5	15	7	M3
PE209	φ 8	φ 8	φ 15	7	20	8	M4
PC209	φ 9	φ 9					
PF209	φ 10	φ 10	φ 22	7.5	24.5	10	M4
PG209	φ 12	φ 12		9	26	10	M4
PJ209	φ 13	φ 13	φ 25	11	33	14	M5
PK209	φ 15	φ 15					
PN209	φ 16	φ 16	φ 29	14	40	18	M5
PL209	φ 19.1	φ 19.1					
PQ209	φ 20	φ 20	φ 37	17	45	21	M6
PH109	φ 25.1	φ 25.1					