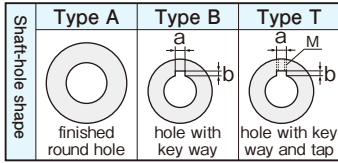


Precision Type S

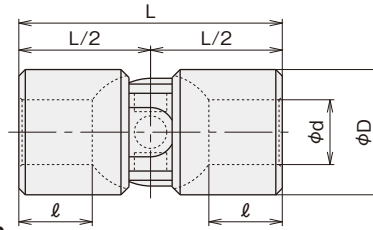
● Please read "request and advice for order" in page 6 before placing an order.

Max. joint angle	Additional machining	Product with shaft refer to page 28 and 31	Boot refer to page 24
up to 30°	possible		



JIS-B1454typeA High Precision Compact Use

- When machining is required, make sure to refer to the description of "request and advice for machining" on the next page.
- A hole for a spring-pin attached should be machined together with a shaft at a location of $\ell/2$.
- Use a boot and oil pack to extend the life of joint.
- Designate new JIS or old JIS for key, when the type of shaft-hole shape is B or T.
- A spring-pin is not attached for a joint with a key way.



■ Type S Dimension Table

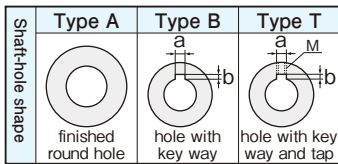
Attachment ● spring-pin 2 pieces

Symbol Size	ϕd^{H7}	ϕD	L	ℓ	New JIS key		Old JIS key		TAP M	Dimension of spring-pin for fixing	Swing of the center	Mass kg	Max. revolution min^{-1}	Max. transmission torque capacity N·m
					a^{JIS9}	b	a^{JIS9}	b						
S- 6	6	16	34	9	2	1.0	2	1.0	M 3	2 × 16	0.10	0.04	2100	7
S- 8	8	18	40	11	3	1.4	3	1.5	M 3	2.5 × 16	0.10	0.06	1900	12
S-10	10	22	45	12	3	1.4	4	1.5	M 4	3 × 20	0.10	0.09	1500	21
S-12	12	26	50	13	4	1.8	4	1.5	M 4	4 × 25	0.10	0.15	1300	31
S-14	14	29	56	16	5	2.3	5	2.0	M 5	5 × 28	0.10	0.20	1150	54
S-16	16	32	65	18	5	2.3	5	2.0	M 5	5 × 32	0.10	0.28	1000	69
S-18	18	37	72	20	6	2.8	5	2.0	M 6	6 × 35	0.10	0.41	880	98
S-20	20	42	82	23	6	2.8	5	2.0	M 6	6 × 40	0.10	0.61	770	127
S-22	22	47	95	25	6	2.8	7	3.0	M 8	6 × 45	0.10	0.91	690	196
S-25	25	52	108	29	8	3.3	7	3.0	M 8	8 × 50	0.10	1.23	630	265
S-30	30	58	122	34	8	3.3	7	3.0	M 8	10 × 60	0.14	1.64	560	343
S-35	35	70	140	39	10	3.3	10	3.5	M10	10 × 70	0.14	2.78	460	490
S-40	40	80	160	44	12	3.3	10	3.5	M10	10 × 80	0.14	4.17	410	834
S-45	45	88	175	49	14	3.8	12	3.5	M10	12 × 90	0.20	5.42	370	1177
S-50	50	95	190	54	14	3.8	12	3.5	M12	12 × 100	0.20	6.76	340	1373
S-60	60	115	220	66	18	4.4	15	5.0	M12	13 × 120	0.20	11.50	280	2157

Precision Type D

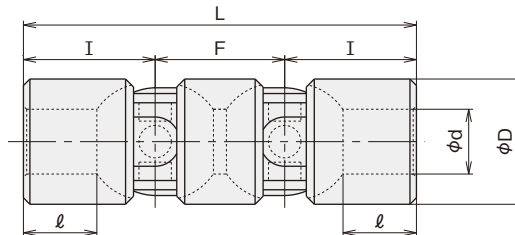
● Please read "request and advice for order" in page 6 before placing an order.

Max. joint angle	Additional machining	Boot refer to page 24
up to 60°	possible	



JIS-B1454typeAA High Precision Compact Use

- When machining is required, make sure to refer to the description of "request and advice for machining" on the next page.
- A hole for a spring-pin attached should be machined together with a shaft at a location of $\ell/2$.
- Use a boot and oil pack to extend the life of joint.
- Designate new JIS or old JIS for key, when the type of shaft-hole shape is B or T.
- A spring-pin is not attached for a joint with a key way.



■ Type D Dimension Table

Attachment ● spring-pin 2 pieces

Symbol Size	ϕd^{H7}	ϕD	L	ℓ	I	F	New JIS key		Old JIS key		TAP M	Dimension of spring-pin for fixing	Swing of the center	Mass kg	Max. revolution min^{-1}	Max. transmission torque capacity N·m
							a^{JIS9}	b	a^{JIS9}	b						
D- 6	6	16	50	9	17	16	2	1.0	2	1.0	M 3	2 × 16	0.10	0.05	1500	5
D- 8	8	18	60	11	20	20	3	1.4	3	1.5	M 3	2.5 × 16	0.10	0.08	1400	9
D-10	10	22	70	12	22.5	25	3	1.4	4	1.5	M 4	3 × 20	0.10	0.14	1100	16
D-12	12	26	80	13	25	30	4	1.8	4	1.5	M 4	4 × 25	0.10	0.23	900	25
D-14	14	29	88	16	28	32	5	2.3	5	2.0	M 5	5 × 28	0.10	0.31	810	41
D-16	16	32	100	18	32.5	35	5	2.3	5	2.0	M 5	5 × 32	0.10	0.43	740	54
D-18	18	37	112	20	36	40	6	2.8	5	2.0	M 6	6 × 35	0.10	0.64	640	78
D-20	20	42	127	23	41	45	6	2.8	5	2.0	M 6	6 × 40	0.10	0.92	560	118
D-22	22	47	145	25	47.5	50	6	2.8	7	3.0	M 8	6 × 45	0.10	1.35	500	147
D-25	25	52	163	29	54	55	8	3.3	7	3.0	M 8	8 × 50	0.10	1.83	450	206
D-30	30	58	182	34	61	60	8	3.3	7	3.0	M 8	10 × 60	0.14	2.38	410	265
D-35	35	70	212	39	70	72	10	3.3	10	3.5	M10	10 × 70	0.14	4.08	330	451
D-40	40	80	245	44	80	85	12	3.3	10	3.5	M10	10 × 80	0.14	6.21	290	637
D-45	45	88	270	49	87.5	95	14	3.8	12	3.5	M10	12 × 90	0.20	8.06	260	902
D-50	50	95	290	54	95	100	14	3.8	12	3.5	M12	12 × 100	0.20	10.02	240	1079
D-60	60	115	340	66	110	120	18	4.4	15	5.0	M12	13 × 120	0.20	17.33	200	1667