

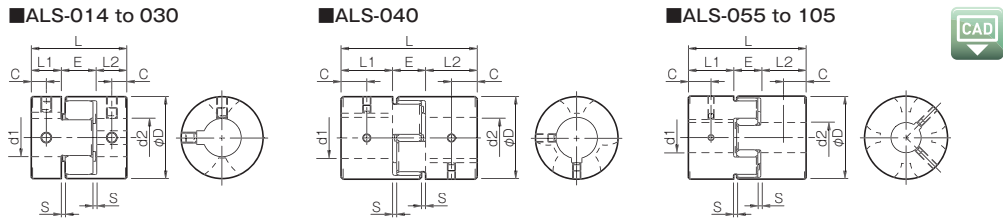
ALS R Types Key/Set Screw Type

Specifications

Model	Torque		Misalignment			Max. rotation speed [min ⁻¹]	Static torsional stiffness [N-m/rad]	Radial stiffness [N/mm]	Moment of inertia [kg-m ²]	Mass [kg]
	Nominal [N-m]	Max. [N-m]	Parallel [mm]	Angular [°]	Axial [mm]					
ALS-014-R	2	4	0.10	1	0 ~ +0.6	34100	21	380	1.91 × 10 ⁻⁷	0.007
ALS-020-R	5	10	0.10	1	0 ~ +0.8	23800	43	400	1.08 × 10 ⁻⁶	0.018
ALS-030-R	12.5	25	0.10	1	0 ~ +1.0	15900	136	650	6.25 × 10 ⁻⁶	0.047
ALS-040-R	17	34	0.10	1	0 ~ +1.2	11900	1550	1700	3.87 × 10 ⁻⁵	0.15
ALS-055-R	60	120	0.10	1	0 ~ +1.4	8700	2000	1350	1.66 × 10 ⁻⁴	0.35
ALS-065-R	160	320	0.10	1	0 ~ +1.5	7400	3100	1400	3.57 × 10 ⁻⁴	0.51
ALS-080-R	325	650	0.10	1	0 ~ +1.8	6000	6000	1710	1.06 × 10 ⁻³	1.01
ALS-095-R	450	900	0.10	1	-0.5 ~ +2.0	5000	10000	4200	2.24 × 10 ⁻³	1.50
ALS-105-R	525	1050	0.15	1	-0.9 ~ +2.0	4500	12000	5000	3.72 × 10 ⁻³	2.05

* Axial displacement of the ALS-014-R to ALS-080-R is not allowed in the negative direction.
 * Max. rotation speed does not take into account dynamic balance.
 * Stiffness values given are from measurements taken at 20°C
 * The moment of inertia and mass are measured for the maximum bore diameter.

Dimensions



Model	d1 · d2			D	L	L1 · L2	E	S	C	Unit [mm]
	Pilot bore	Min.	Max.							
ALS-014-R	3	3	6.5	14	22	7	8	1	3.5	
ALS-020-R	4	4	9.6	20	30	10	10	1	5	
ALS-030-R	5	6	14	30	35	11	13	1.5	5.5	
ALS-040-R	5	8	22	40	66	25	16	2	12.5	
ALS-055-R	5	10	28	55	78	30	18	2	15	
ALS-065-R	5	14	38	65	90	35	20	2.5	17.5	
ALS-080-R	10	19	45	80	114	45	24	3	22.5	
ALS-095-R	8	19	55	95	126	50	26	3	25	
ALS-105-R	10	19	60	105	140	56	28	3.5	28	

* "Pilot bore" refers to center processing.

Standard Bore Diameter

Model	Standard bore diameter d1, d2 [mm]																														
	3	4	5	6	6.35	8	9	9.525	10	11	12	14	15	16	18	19	20	24	25	28	30	32	35	38	40	42	45	50	55	60	
ALS-014-R	●	●	●	●	●																										
ALS-020-R			●	●	●	●	●	●																							
ALS-030-R						●	●	●	●	●	●																				
ALS-040-R										●	●	●	●	●	●	●															
ALS-055-R													●	●	●	●	●	●	●	●											
ALS-065-R																	●	●	●	●	●	●	●	●	●	●	●	●	●	●	
ALS-080-R																					●	●	●	●	●	●	●	●	●	●	
ALS-095-R																										●	●	●	●	●	●
ALS-105-R																										●	●	●	●	●	●

* The bore diameters marked with ● are supported as standard bore diameter.
 * ø 11 and below have no keyway; ø12 and above can be processed for old JIS standards, new JIS standards, and new standard motors.
 * The only standard processing of bore diameters of the ALS-095 and ALS-105 are for new JIS standards and new standard motors.

How to Place an Order

