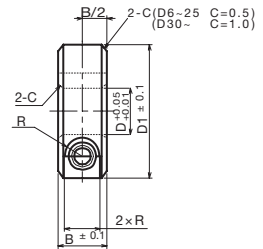
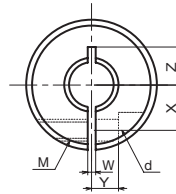


Shaft Collar <KSC-SL>

● Order No. Example

KSC0610SL

Shaft Collar No.



* Effective and accurate mounting can be done with the clamp that is used for positioning and fixing the sprocket and the timing pulley.

◇ List of Shaft Collar Sizes

Shaft Collar No.	Shaft Hole Diameter ϕD	Total Width $B \pm 0.1$	Outer Diameter $D1$	Bolt Hole M	Bolt $M \times$ Length	d	R	W	X	Y	Z	Mass (g)	¥
KSC 0308-SL	3	8	15	M 3	M3× 8	3.4	3	1	4.5	3	4.5	11	
KSC 0408-SL	4	8	15	M 3	M3× 8	3.4	3	1	4.5	3	4.5	10	
KSC 0508-SL	5	8	20	M 3	M3×10	3.4	3	1	6	4	7	18	
KSC 0510-SL	5	10	20	M 4	M4×10	4.5	3.75	1	6	4	6	22	
KSC 0608-SL	6	8	20	M 3	M3×10	3.4	3	1	6	4	6	17	
KSC 0610-SL	6	10	20	M 4	M4×10	4.5	3.75	1	6	4	6	22	
KSC 0808-SL	8	8	25	M 3	M3×10	3.4	3	1.5	8	5	7	27	
KSC 0810-SL	8	10	25	M 4	M4×12	4.5	3.75	1.5	8	5	9	33	
KSC 0812-SL	8	12	28	M 5	M5×16	5.5	4.5	1.5	8.5	5	10	51	
KSC 0815-SL	8	15	30	M 6	M6×15	7	6	1.5	9	5	10	73	
KSC 1010-SL	10	10	30	M 4	M4×12	4.5	3.75	1.5	9	5	11	47	
KSC 1012-SL	10	12	30	M 5	M5×16	5.5	4.5	1.5	9	5	11	56	
KSC 1015-SL	10	15	35	M 6	M6×18	7	6	1.5	10	6	12.5	99	
KSC 1210-SL	12	10	30	M 4	M4×12	4.5	3.75	1.5	10	5	11	63	
KSC 1212-SL	12	12	30	M 5	M5×16	5.5	4.5	1.5	10	5	11	53	
KSC 1215-SL	12	15	35	M 6	M6×18	7	6	1.5	11	6	12.5	95	
KSC 1310-SL	13	10	30	M 4	M4×12	4.5	3.75	1.5	10	5	11	43	
KSC 1315-SL	13	15	35	M 6	M6×18	7	6	1.5	11	6	12.5	93	
KSC 1510-SL	15	10	32	M 4	M4×12	4.5	3.75	1.5	11	6	11	47	
KSC 1512-SL	15	12	35	M 5	M5×16	5.5	4.5	1.5	12	6	13	70	
KSC 1515-SL	15	15	40	M 6	M6×20	7	6	1.5	13	8	13	120	
KSC 1610-SL	16	10	35	M 4	M4×12	4.5	3.75	1.5	12	6	13	57	
KSC 1612-SL	16	12	35	M 5	M5×16	5.5	4.5	1.5	12	6	13	68	