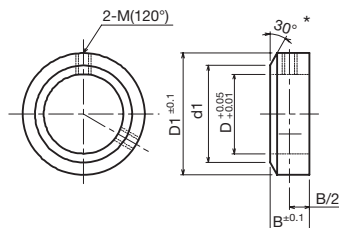


# Shaft Collar <KSC>

## ● Order No. Example KSC0506

Shaft Collar No.



\* Most suitable for positioning the idler sprocket and fixing the bearing housing to the shaft.

### ◇ List of Shaft Collar Sizes

Shaft Collar No.	Shaft Hole Diameter ΦD <sup>+0.05</sup> / <sub>-0.01</sub>	Total Width B±0.1	Outer Diameter D1	d1	Hole for Set Screws M	Set Screws M x Length	Mass (g)	¥
KSC 0305	3	5	7	—	☆ M3	M3×3	2	
KSC 0306	3	6	7	—	☆ M3	M3×3	2	
KSC 0308	3	8	7	—	☆ M3	M3×3	2	
KSC 0405	4	5	8	—	☆ M3	M4×4	2	
KSC 0406	4	6	12	—	☆ M4	M4×4	5	
KSC 0408	4	8	12	—	☆ M4	M4×4	7	
KSC 0505	5	5	11	—	☆ M3	M3×3	3	
KSC 0506	5	6	14	—	☆ M4	M4×4	7	
KSC 0508	5	8	14	—	☆ M4	M4×4	9	
KSC 0510	5	10	14	—	☆ M4	M4×4	11	
KSC 0605	6	5	12	—	M3	M3×3	4	
KSC 0606	6	6	15	—	☆ M4	M4×4	7	
KSC 0608	6	8	15	—	☆ M4	M4×4	10	
KSC 0610	6	10	16	—	☆ M4	M4×4	14	
KSC 0805	8	5	14	—	M3	M3×3	5	
KSC 0806	8	6	16	13	M4	M4×4	8	
KSC 0808	8	8	16	13	M4	M4×4	10	
KSC 0810	8	10	18	13	M4	M4×4	17	
KSC 1005	10	5	16	—	M3	M3×3	5	
KSC 1006	10	6	18	16	M4	M4×4	9	
KSC 1008	10	8	18	16	M4	M4×4	12	
KSC 1010	10	10	20	16	M4	M4×4	19	
KSC 1206	12	6	20	—	M4	M4×4	10	
KSC 1208	12	8	22	20	M4	M4×4	17	
KSC 1210	12	10	26	20	M5	M5×6	33	
KSC 1212	12	12	26	20	M6	M6×6	40	
KSC 1306	13	6	20	—	M4	M4×4	9	
KSC 1308	13	8	22	20	M4	M4×4	16	
KSC 1310	13	10	26	20	M5	M5×6	32	
KSC 1412	14	12	26	20	M5	M5×6	36	
KSC 1506	15	6	24	—	M4	M4×4	13	
KSC 1508	15	8	25	24	M5	M5×6	20	
KSC 1510	15	10	25	24	M5	M5×6	25	
KSC 1512	15	12	28	24	M5	M5×6	42	
KSC 1606	16	6	24	—	M4	M4×4	12	
KSC 1608	16	8	28	24	M5	M5×6	27	
KSC 1610	16	10	28	24	M5	M5×6	33	
KSC 1612	16	12	28	24	M5	M5×6	40	
KSC 1710	17	10	30	26	M6	M6×6	38	
KSC 1712	17	12	32	26	M6	M6×6	55	
KSC 1815	18	15	32	29	M6	M6×6	65	

The ☆ indicates 1 screw

\* Exterior may differ slightly from drawings according to d1 dimensions.