

**NEW**

# K Standard Miter Gear



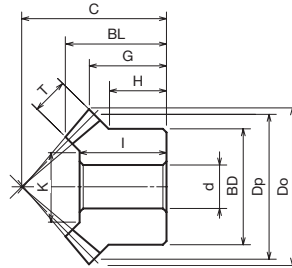
● Order No. Example

**KM1-20**

Miter Gear No.

**KM2.5-25**

Miter Gear No.



**m** Carbon Structural Steel  
**s** Black Oxide Finish

Miter Gears No.	Module	No. of Teeth	Hole Diameter d H7	Boss Diameter BD	Tooth Tip Circle Diameter Do	Reference circle Diameter Dp	Assembly Distance C	Total Length BL	Tooth distance G	Boss Length H	Length of hole I	Tooth Width T	Pressing Surface Diameter K	Weight kg	¥	Semi-F ¥
KM1-20	1	20	6	16	21.41	20	20	13.94	10.71	8	12	5	9.86	0.02		
KM1-25	1	25	6	20	26.41	25	23	15.16	11.21	8	14	6	15.03	0.04		
KM1-30	1	30	8	24	31.41	30	28	17.71	13.71	10	16	6	19.03	0.06		
KM1.5-20	1.5	20	8	26	32.12	30	30	21.24	16.06	13	19	8	15.378	0.07		
KM1.5-25	1.5	25	10	30	39.62	37.5	34	22.25	16.31	11.5	19	9	19.54	0.11		
KM1.5-30	1.5	30	10	36	47.12	45	43	28.24	21.56	16	25	10	25.7	0.21		
KM2-20	2	20	12	34	42.83	40	37	24.89	18.41	14	22	10	21.72	0.15		
KM2-25	2	25	12	40	52.83	50	40	24.33	16.41	10	20	12	26.06	0.22		
KM2-30	2	30	12	45	62.83	60	50	29.42	21.41	12.5	25	12	36.07	0.37		
KM2.5-20	2.5	20	14	42	53.54	50	48	32.54	24.77	19	29	12	28.06	0.3		
KM2.5-25	2.5	25	16	50	66.04	62.5	50	30.41	20.52	12.5	26	15	34.57	0.42		
KM2.5-30	2.5	30	16	60	78.54	75	62	36.28	26.27	17	32	15	47.57	0.76		
KM3-20	3	20	16	50	64.24	60	58	39.84	30.12	23	35	15	31.567	0.53		
KM3-25	3	25	20	60	79.24	75	60	37.81	24.62	15	32	20	37.44	0.74		
KM3-30	3	30	20	70	94.24	90	75	45.47	32.12	20	40	20	53.43	1.32		
KM3.5-20	3.5	20	20	60	74.95	70	65	44.13	32.47	25	40	18	39.1	0.82		
KM3.5-25	3.5	25	25	70	92.45	87.5	70	43.23	28.72	17.5	37	22	46.77	1.15		
KM3.5-30	3.5	30	25	90	109.95	105	85	49.66	34.97	25	45	22	67.77	2.2		
KM4-20	4	20	20	64	85.65	80	75	50.78	37.83	27	45	20	43.436	1.15		
KM4-25	4	25	28	80	105.66	100	80	49.32	32.83	20	43	25	55.29	1.73		
KM4-30	4	30	28	100	125.66	120	95	54.52	37.83	25	50	25	79.28	3.09		

\* Please refer to P24-P33 for the Semi-F series' miter gears order method.



Order Method

Pinion Gear No. and Quantity



Guide

\* Since we also manufacture sizes other than those in the catalog, and machine shaft holes/keys/taps, etc., depending on your request, please contact our company's sales office for details.



Postage

Same-day shipping

Semi-F Series & FITLINK  
Roller Chains  
Chain Accessories  
Idlers & Tensioners  
Sprockets  
Oilless Bushings  
Transmission Accessories  
Conveyor Chains/Sprockets  
Chain Couplings  
Resin Halls  
Tight Speed/Center /Transp/ Chains  
Timing Belts/ Pulleys/ Hangers  
Shaft Collars  
Pinions/Racks/ Miter Gears  
Imperfect Products