

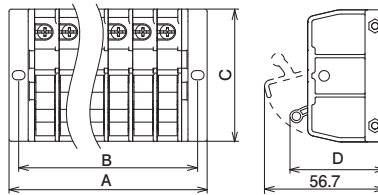
Disconnect terminal block (Assembly type) TXSUM Series

Application	No. of pins	Type name	External dimensions (mm)				General mass (g)
			A	B	C	D	
600V ^{Note} 5.5mm ² [20A] M4×8.5± raised type with name sticker	2	TXSUM 20 02	47	38	62	44.7	63
	3	TXSUM 20 03	58.5	49.5			85
	4	TXSUM 20 04	70	61			106
	5	TXSUM 20 05	81.5	72.5			128
	6	TXSUM 20 06	93	84			149
	7	TXSUM 20 07	104.5	95.5			171
	8	TXSUM 20 08	116	107			192

Remark: Disconnect terminal block does not have shutoff function. Turn ON/OFF switch when there is no electric continuity.
Note: When complied with IEC60947-7-1, the rated insulation voltage is 800V.

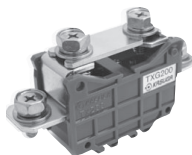


TXSUM 20 06

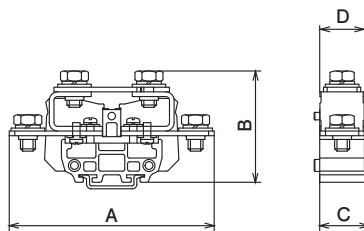


Terminal block for grounding TXG Series

Application		Type name	Number of contents	External dimensions (mm)				General mass per 1 piece (g)
				A	B	C	D	
Terminal unit								
600V	38mm ² [130A] M8	TXG 100	6 pieces	110	60	27	24	189
	100mm ² [240A] M10	TXG 200	3 pieces	132	71.5	39	30	413
End plate								
For TXG100		TXGA 10	5 plates	—	—	Thickness 4		11
Dummy block								
For TXG100		TXG 100D	6 pieces	—	—	—	—	25
For TXG200		TXG 200D	3 pieces	—	—	—	—	51



TXG 200

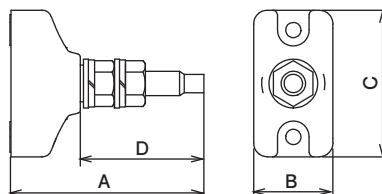


Stud terminal block TS-R Series

Application		Type name	External dimensions (mm)				General mass (g)
			A	B	C	D	
600V	38mm ² [130A] M8	TS 100R	64.3	26	48	38.3	80
	100mm ² [240A] M10	TS 200R	75.5	36	60	45	145
	200mm ² [370A] M12	TS 400R	92.3	40	70	58.3	285
	325mm ² [520A] M16	TS 600R	115	48	75	75.8	410



TS 100R



Line-up
Clutch Lock
Terminal Blocks
PLC Interface
Terminal Blocks
Rail Type
Terminal Blocks
Assembly
Terminal Blocks
Special Purpose
Terminal Blocks
Terminal
Block Accessories