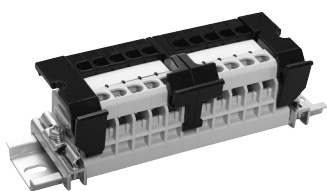


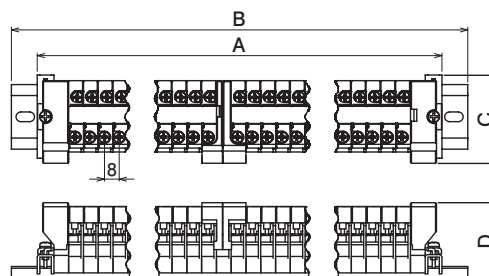
Separate type terminal block

TKS15 Series

Application		No. of pins	Type name	External dimensions (mm)				General mass (g)
				A	B	C	D	
600V 2.0mm ² [15A] M3.5×8± raised type with name sticker	5P+5P Rail integrated	10	TKS15 0505	122	150	48	42	195
	5P+10P Rail integrated	15	TKS15 0510	162	195			255
	10P+10P Rail integrated	20	TKS15 1010	202	240			310
	10P+15P Rail integrated	25	TKS15 1015	242	270			375



TKS15 0505



Fuse terminal block and Disconnect terminal block

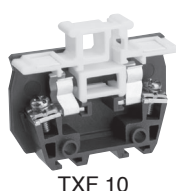
TXF and TXS Series

Application				Type name	Number of contents	External dimensions (mm)				General mass per pole (g)	
						A	B	C	D		
Terminal unit											
Fuse terminal block	600V	250V	M4 × 10	Without neon	TXF 10	20P	59	49.5	12.5	10	31
		5.5mm ² [10A]	± screw type	With neon	TXF 10 N	20P	59	49.5	12.5	10	32
Disconnecting terminal block	600V ^{Note}	5.5mm ² [20A]	M4 × 10 ± screw type		TXS 20	20P	59	40	12.5	10	26
			M4 × 8.5 ± raised type		TXSU 20	20P	62	44.7	11.5	9.7	21
Optional fuse											
6.35 × 31.8 mm glass tube			1A		TXFU 1A	1 piece	—	—	—	—	—
			3A		TXFU 3A	1 piece	—	—	—	—	—
			5A		TXFU 5A	1 piece	—	—	—	—	—
			10A		TXFU 10A	1 piece	—	—	—	—	—
End plate											
For TXF10, TXF10N and TXS20					TXFA 1	10 plates	59	40	Thickness 3.5		5
For TXSU20					TXSUA 20	10 plates	62	36.3	Thickness 3		6.5

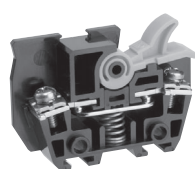
Remarks:

1. The fuse terminal block with neon illuminates the neon lamp when the fuse is blown (common for 100V/200V).
2. The disconnecting terminal block does not have the shutoff function. Turn ON/OFF the switch when there is no electric continuity.

Note: When complied with IEC60947-7-1, the rated insulation voltage is 800V.



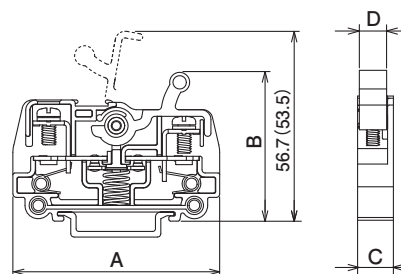
TXF 10



TXS 20



TXSU 20



※TXS20 measurement in ()

Line-up
Clutch Lock Terminal Blocks
PLC Interface Terminal Blocks
Rail Type Terminal Blocks
Assembly Terminal Blocks
Special Purpose Terminal Blocks
Terminal Block Accessories