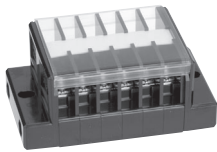


TX Assembled terminal block **TXM, TXUM and TXWM Series**

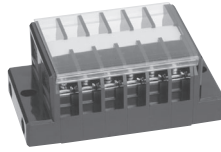
Standard type (1/5)

No. of pins	Type name	600V, 1.25mm ² [15A], M3×6±, screw type				General mass (g)	Type name	600V, 2mm ² [20A], M3×8±, screw type				General mass (g)	Type name	600V, 2mm ² [20A], M3.5×8±, screw type				General mass (g)
		A	B	C	D			A	B	C	D			A	B	C	D	
2	TXM 7 02	39	B=38,		25	TXM 10 SM3 02	40	B=38,		30	TXM 10 S 02	40	B=38,		30			
3	TXM 7 03	46	C=29.6,		30	TXM 10 SM3 03	48	C=29.6,		33	TXM 10 S 03	48	C=29.6,		33			
4	TXM 7 04	53.5	D=6		40	TXM 10 SM3 04	56	D=6.7		43	TXM 10 S 04	56	D=6.7		43			
5	TXM 7 05	60.5			45	TXM 10 SM3 05	64			48	TXM 10 S 05	64			48			
6	TXM 7 06	68			50	TXM 10 SM3 06	72			56	TXM 10 S 06	72			56			
8	TXM 7 08	82.5			65	TXM 10 SM3 08	88			70	TXM 10 S 08	88			70			
10	TXM 7 10	97			80	TXM 10 SM3 10	104			85	TXM 10 S 10	104			85			
12	TXM 7 12	112			95	TXM 10 SM3 12	120			105	TXM 10 S 12	120			105			
14	TXM 7 14	126.5			110	TXM 10 SM3 14	136			120	TXM 10 S 14	136			120			
15	TXM 7 15	133.5			115	TXM 10 SM3 15	144			125	TXM 10 S 15	144			125			
16	TXM 7 16	141			120	TXM 10 SM3 16	152			135	TXM 10 S 16	152			135			
18	TXM 7 18	155.5			135	TXM 10 SM3 18	168			150	TXM 10 S 18	168			150			
20	TXM 7 20	170			150	TXM 10 SM3 20	184			165	TXM 10 S 20	184			165			
22	TXM 7 22	185			165	TXM 10 SM3 22	200			180	TXM 10 S 22	200			180			
24	TXM 7 24	199.5			175	TXM 10 SM3 24	216			195	TXM 10 S 24	216			195			
25	TXM 7 25	206.5			185	TXM 10 SM3 25	224			200	TXM 10 S 25	224			200			
30	TXM 7 30	243			220	TXM 10 SM3 30	264			240	TXM 10 S 30	264			240			

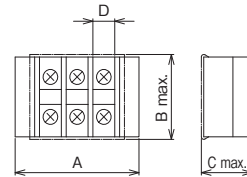
Remark: With cover and name sticker.



TXM 7 06



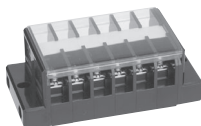
TXM 10 SM3 06



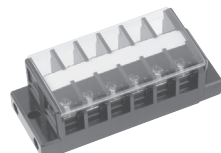
Standard type (2/5)

No. of pins	Type name	600V, 2mm ² [20A], M3.5×8±, screw type				General mass (g)	Type name	600V, 5.5mm ² [40A], M4×10±, screw type				General mass (g)	Type name	600V, 8mm ² [50A], M5×12±, screw type				General mass (g)
		A	B	C	D			A	B	C	D			A	B	C	D	
2	TXM 10 02	43	B=38,		30	TXM 20 02	47	B=38,		40	TXM 30 02	57	B=46,		75			
3	TXM 10 03	53	C=29.6,		40	TXM 20 03	59	C=29.6,		50	TXM 30 03	72	C=35,		100			
4	TXM 10 04	62	D=8		50	TXM 20 04	70	D=9.7		65	TXM 30 04	86	D=12.5		125			
5	TXM 10 05	72			60	—	—			—	—	—			—			
6	TXM 10 06	81			70	TXM 20 06	93			90	TXM 30 06	115			175			
8	TXM 10 08	100			90	TXM 20 08	116			120	TXM 30 08	144			230			
10	TXM 10 10	119			110	TXM 20 10	139			145	TXM 30 10	173			280			
12	TXM 10 12	138			130	TXM 20 12	162			170	TXM 30 12	202			335			
14	TXM 10 14	157			150	TXM 20 14	185			200	—	—			—			
15	TXM 10 15	167			160	TXM 20 15	197			215	TXM 30 15	246			410			
16	TXM 10 16	176			165	TXM 20 16	208			225	—	—			—			
18	TXM 10 18	195			185	TXM 20 18	231			255	TXM 30 18	289			490			
20	TXM 10 20	214			205	TXM 20 20	254			280	TXM 30 20	318			540			
22	TXM 10 22	233			225	TXM 20 22	277			305	—	—			—			
24	TXM 10 24	252			245	TXM 20 24	300			335	—	—			—			
25	TXM 10 25	262			255	TXM 20 25	312			345	—	—			—			
30	TXM 10 30	309			305	TXM 20 30	369			415	—	—			—			

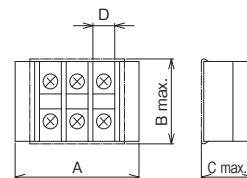
Remark: With cover and name sticker.



TXM 10 06



TXM 20 06



Line-up

Clutch Lock Terminal Blocks

PLC Interface Terminal Blocks

Rail Type Terminal Blocks

Assembly Terminal Blocks

Special Purpose Terminal Blocks

Terminal Block Accessories