

Compact series (rail type)

TW and TTW Series

Compact type

| Application | | Type name | | Number of contents | External dimensions (mm) | | | | General mass per pole (g) |
|---|----------------|----------------|-----------------|--------------------|--------------------------|-----------------------------|-------------------------------|----|---------------------------|
| | | With button | Without button | | A | B | C | D | |
| Terminal unit | | | | | | | | | |
| 600V 10A 1.25mm ² (AWG16) | 1 to 1 | TW 10 B | TW 10 BN | 50P | 40.3 | 25.5 | 3.5 | — | 3 |
| | 1 to 2 | TW 15 B | TW 15 BN | 50P | 44.3 | 29.8 | 3.5 | — | 4 |
| | 2 to 2 | TW 16 B | TW 16 BN | 50P | 50.6 | 29.8 | 3.5 | — | 4 |
| 600V 20A 2mm ² (AWG14) | 1 to 1 | TW 20 B | TW 20 BN | 50P | 40.7 | 28.8 | 4.6 | — | 5 |
| | 1 to 2 | TW 25 B | TW 25 BN | 50P | 46.6 | 29.8 | 4.6 | — | 5 |
| | 2 to 2 | TW 26 B | TW 26 BN | 50P | 55 | 29.8 | 4.6 | — | 6 |
| 600V 30A 5.5mm ² (AWG10) | 1 to 1 | TW 30 B | TW 30 BN | 25P | 50 | 38 | 6 | — | 9 |
| 600V 50A 8mm ² (AWG8) | 1 to 1 | TW 50 B | TW 50 BN | 10P | 65.5 | 43.9 | 9.5 | — | 26 |
| End plate | | | | | | | | | |
| 1 pair with one each at both sides | For TW10B | TWA 10B | | 5 pairs | 40.3 | 25.5 | Thickness 5.5 ^{Note} | | 4 |
| | For TW15B | TWA 15B | | 5 pairs | 44.3 | 29.8 | Thickness 5.5 ^{Note} | | 4.5 |
| | For TW16B | TWA 16B | | 5 pairs | 50.6 | 29.8 | Thickness 5.5 ^{Note} | | 5.5 |
| | For TW20B | TWA 20B | | 5 pairs | 40.7 | 28.8 | Thickness 6 ^{Note} | | 4 |
| | For TW25B | TWA 25B | | 5 pairs | 46.6 | 29.8 | Thickness 6 ^{Note} | | 4.5 |
| | For TW26B | TWA 26B | | 5 pairs | 55 | 29.8 | Thickness 6 ^{Note} | | 7 |
| | For TW30B | TWA 30B | | 5 pairs | 50 | 38 | Thickness 6 ^{Note} | | 9 |
| For TW50B | TWA 50B | | 5 pairs | 65.5 | 43.9 | Thickness 6 ^{Note} | | 11 | |

Notes:

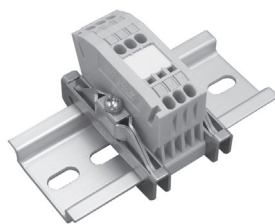
1. The thickness of end plate indicates the total size of 2 plates at both sides (1 pair).
2. End plate general mass is total of right and left 2 plates (1 pair).

Common unit type

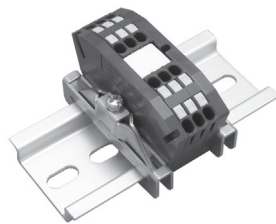
| Application | | Body color | Type name | | Number of contents | External dimensions (mm) | | | | General mass per pole (g) |
|---|-------------|------------------|------------------|-------------------|--------------------|--------------------------|-----------------------------|-----|-----|---------------------------|
| | | | With button | Without button | | A | B | C | D | |
| Terminal unit | | | | | | | | | | |
| 600V 10A 1.25mm ² (AWG16) | 2 to 2 | Brown | TW 16 BC | TW 16 BCN | 30P | 50.6 | 29.8 | 3.5 | — | 4 |
| | | Blue | TW 16 BCB | TW 16 BCBN | 30P | 50.6 | 29.8 | 3.5 | — | 4 |
| 600V 20A 2mm ² (AWG14) | 2 to 2 | Brown | TW 26 BC | TW 26 BCN | 30P | 55 | 29.8 | 4.6 | — | 6 |
| | | Blue | TW 26 BCB | TW 26 BCBN | 30P | 55 | 29.8 | 4.6 | — | 6 |
| End plate | | | | | | | | | | |
| 1 pair with one each at both sides | For TW16BC | TWA 16BC | | 5 pairs | 50.6 | 29.8 | Thickness 7 ^{Note} | | 5.5 | |
| | For TW16BCB | TWA 16BCB | | 5 pairs | 50.6 | 29.8 | Thickness 7 ^{Note} | | 5.5 | |
| | For TW26BC | TWA 26BC | | 5 pairs | 55 | 29.8 | Thickness 8 ^{Note} | | 10 | |
| | For TW26BCB | TWA 26BCB | | 5 pairs | 55 | 29.8 | Thickness 8 ^{Note} | | 10 | |

Notes:

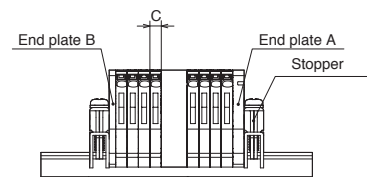
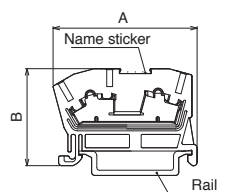
1. The thickness of end plate indicates the total size of 2 plates at both sides (1 pair).
2. End plate general mass is total of right and left 2 plates (1 pair).



TW15B



TW16BC



Line-up
Clutch Lock Terminal Blocks
PLC Interface Terminal Blocks
Rail Type Terminal Blocks
Assembly Terminal Blocks
Special Purpose Terminal Blocks
Terminal Accessories