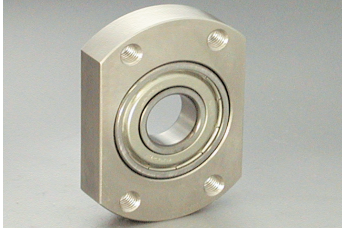


# ベアリングホルダーセット 直接取付タイプ 楕円型

Bearing Holder Set Direct installation Type Ellipse style

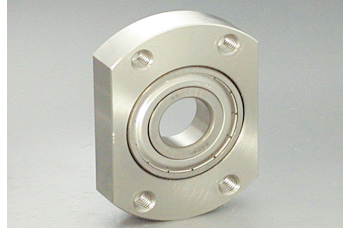
ボールベアリングをホルダーへセットしたタイプです。

RoHS指令適合品



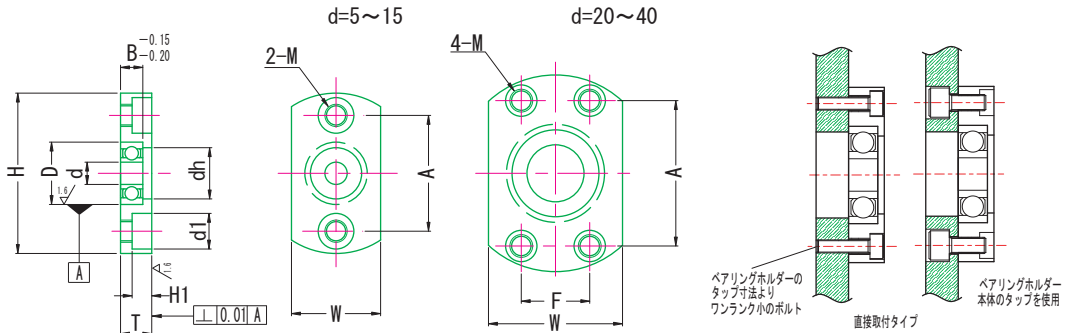
BEM

- H 鋼材S45C
- H 鉛フリー無電解ニッケルメッキ  
Electroless Nickel plating
- B ベアリング鋼 Steel



BES

- H ステンレスSUS304  
Stainless steel
- B ステンレス製  
Stainless steel



寸法表

Unit : mm

| 品番  | ベアリング  | 品番  | ベアリング  | d  | D(H7) 許容差 | B      | H   | W  | T  | dh | A  | F  | M(下孔)              | d1   | H1  | (g) |
|-----|--------|-----|--------|----|-----------|--------|-----|----|----|----|----|----|--------------------|------|-----|-----|
| BEM | 605ZZ  |     |        | 5  | 14        |        | 36  | 20 | 7  | 10 | 26 |    |                    |      |     | 29  |
|     | 625ZZ  |     |        | 5  | 16        | +0.018 | 38  | 22 | 7  | 12 | 28 |    |                    |      |     | 35  |
|     | 606ZZ  |     |        | 6  | 17        | 0      | 39  | 23 | 8  | 13 | 29 |    |                    |      |     | 41  |
|     | 626ZZ  |     |        | 6  | 19        |        | 41  | 25 | 8  | 15 | 31 |    |                    |      |     | 48  |
|     | 608ZZ  |     |        | 8  | 22        |        | 45  | 29 | 9  | 18 | 35 |    |                    |      |     | 72  |
|     | 628ZZ  |     |        | 8  | 24        |        | 47  | 32 | 10 | 20 | 37 |    |                    |      |     | 87  |
|     | 6900ZZ | BES | 6900ZZ | 10 | 22        | +0.021 | 45  | 29 | 8  | 19 | 35 |    | M 5×P0.8<br>(4.3)  | 8.0  | 4.4 | 64  |
|     | 6000ZZ |     | 6000ZZ | 10 | 26        | 0      | 50  | 34 | 10 | 22 | 40 |    |                    |      |     | 104 |
|     | 6200ZZ |     | 6200ZZ | 10 | 30        |        | 54  | 38 | 11 | 24 | 44 |    |                    |      |     | 130 |
|     | 6901ZZ |     | 6901ZZ | 12 | 24        |        | 48  | 31 | 8  | 21 | 38 |    |                    |      |     | 71  |
|     | 6001ZZ |     | 6001ZZ | 12 | 28        |        | 52  | 36 | 10 | 24 | 42 |    |                    |      |     | 106 |
|     | 6201ZZ |     | 6201ZZ | 12 | 32        | +0.025 | 56  | 40 | 12 | 26 | 46 |    |                    |      |     | 157 |
|     | 6902ZZ |     | 6902ZZ | 15 | 28        | +0.021 | 57  | 37 | 9  | 25 | 45 |    |                    |      |     | 106 |
|     | 6002ZZ |     | 6002ZZ | 15 | 32        |        | 60  | 40 | 11 | 28 | 48 |    | M 6×P1.0<br>(5.2)  | 9.5  | 5.4 | 144 |
|     | 6202ZZ |     | 6202ZZ | 15 | 35        |        | 64  | 44 | 13 | 29 | 52 |    |                    |      |     | 205 |
|     | 6904ZZ |     | 6904ZZ | 20 | 37        | +0.025 | 69  | 47 | 11 | 34 | 51 | 24 |                    |      |     | 176 |
|     | 6004ZZ |     | 6004ZZ | 20 | 42        | 0      | 77  | 54 | 14 | 36 | 56 | 32 | M 8×P1.25<br>(6.8) | 11.0 | 6.5 | 294 |
|     | 6204ZZ |     | 6204ZZ | 20 | 47        |        | 81  | 58 | 16 | 40 | 59 | 34 |                    |      |     | 406 |
|     | 6005ZZ |     | 6005ZZ | 25 | 47        |        | 88  | 58 | 14 | 41 | 63 | 36 |                    |      |     | 365 |
|     | 6205ZZ |     | 6205ZZ | 25 | 52        |        | 94  | 64 | 17 | 45 | 68 | 39 |                    |      |     | 528 |
|     | 6006ZZ |     | 6006ZZ | 30 | 55        |        | 96  | 66 | 15 | 48 | 70 | 40 |                    |      |     | 471 |
|     | 6206ZZ |     | 6206ZZ | 30 | 62        | +0.030 | 104 | 74 | 18 | 55 | 77 | 44 | M10×P1.5<br>(8.5)  | 14.0 | 8.6 | 709 |
|     | 6007ZZ |     | 6007ZZ | 35 | 62        | 0      | 104 | 74 | 16 | 55 | 75 | 44 |                    |      |     | 600 |
|     | 6008ZZ |     | 6008ZZ | 40 | 68        |        | 114 | 82 | 17 | 60 | 80 | 54 |                    |      |     | 790 |