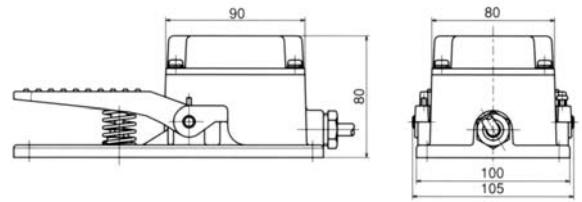
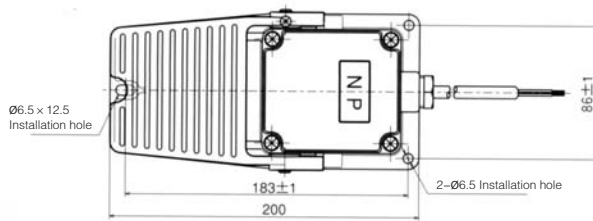


Industry Use No Protection Jacket Type SFMP series



●SFMP series have the same external dimensions.



SFMP-1

- SFMP-1
A design with the half protection cover of SFM-1 removed.
- SFMP-2
Two loop linkage design of SFMP-1.

Major Parameters

Model	Rating	Contact Structure	Action		Insulation Rubber Soft Wire	Action Force (N)	Built-in Switch	Weight (g)
			Instantaneous	Inter-active				
SFMP-1	AC250V 10A	1c	●		VCTF3 1 core × 1.25mm ² × 1m	32.3	Z type micro switch	880
SFMP-2	AC250V 6A	2c	●		VCTF6 1 core × 0.75mm ² × 1m			970

Major Raw Materials

Model	Main Body/Protection Cover	Return Spring	Transmission Shaft	Sealing Screw Cap	Color/ Paint Color
SFMP-1	Aluminum die casting	SWP (Piano wire)	SS400 (Steel)	Aldehyde resin	Metal color, equivalent to R25-635*
SFMP-2					

*Refer to R version standard color card published by Japan Paint Manufacturers Association.

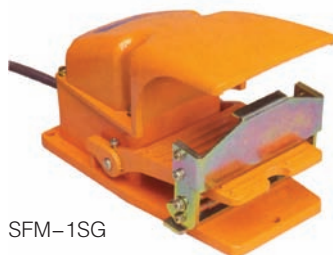
[Universal Parameters]

- Insulation resistance/ over DC500V 100MΩ.
- Voltage withstanding/ AC1500V /min.
- Ambient temperature: -5-40°C
- Ambient relative humidity/ below 85%RH.

Industry Use Half Protection Jacket Type SFM series

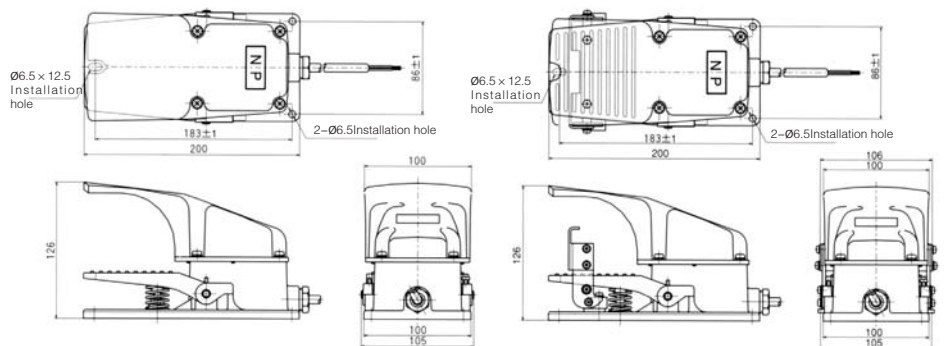


SFM-1



SFM-1SG

- SFM-1
Z type micro switch is used as built-in switch, suitable for medium load high frequency. The model features long service life and high precision.
- SFM-2
Two loop linkage design of SFM-1.
- SFM-1HN
An interactive universal foot switch ideal for continuous live operation. Equipped with Z type micro switch, the model features long service life and high precision.
- SFM-1SG
Our independently developed locking device makes pedal operation safer. No pedal operation is possible if no foot is inserted.



●SFM-1 series has the same external dimensions.

Major Parameters

Model	Rating	Contact Structure	Action		Insulation Rubber Soft Wire	Action Force (N)	Built-in Switch	Weight (g)
			Instantaneous	Inter-active				
SFM-1	AC250V 10A	1c	●		VCTF 3 core × 1.25mm ² × 1m	32.3	Z type micro switch	1100
SFM-2	AC250V 6A	2c	●		VCTF 6 core × 0.75mm ² × 1m			1200
SFM-1HN	AC250V 5A	1a		●	VCTF 2 core × 0.75mm ² × 1m			1100
SFM-1SG	AC250V 10A	1c	●		VCTF 3 core × 1.25mm ² × 1m			1400

Major Raw Materials

Model	Main Body/Protection Cover	Return Spring	Transmission Shaft	Sealing Screw Cap	Color/ Paint Color
SFM-1	Aluminum die casting	SWP (Piano wire)	SS400 (Steel)	Aldehyde resin	Metal color, equivalent to R25-635*
SFM-2					
SFM-1HN					Equivalent to R39-236*
SFM-1SG					

*Refer to R version standard color card published by Japan Paint Manufacturers Association.

[Universal Parameters]

- Insulation resistance/ over DC500V 100MΩ.
- Voltage withstanding/ AC1500V /min.
- Ambient temperature: -5-40°C
- Ambient relative humidity/ below 85%RH.