

MEASURING TOOL HOLDERS

Model ME-BW WATERPROOF LED LIGHT STAND

Light part waterproof

Parts available individually

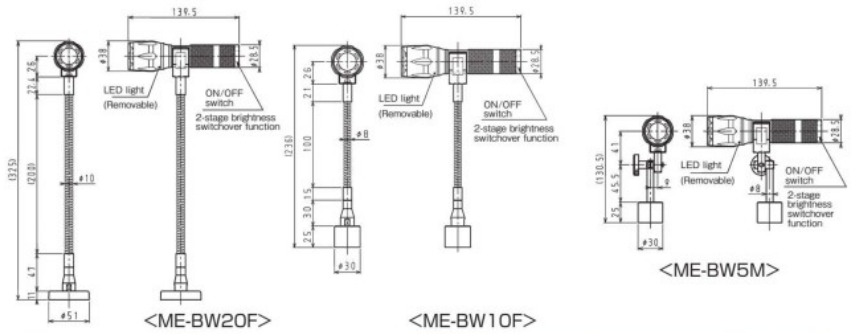
LED light illuminates a target place brightly!

[Application]

Recommended not only for field work but also for various situations such as precision machining, inspection, spotlighting, DIY work and outdoor.

[Features]

- The high brightness LED is equipped with a 2-stage brightness switchover function, which allows selection of brightness according to situations.
- The flexible tube type allows the lighting direction to be set as desired. The mechanical lock type is compact and can be locked quickly for use in a limited space.
- The LED light can be removed from the holder and carried for DIY work and during night.



Useful in various scenes!



Model	Type	Holding Power	Height	LED Light				Mass	
				LED	Illuminance	Battery	Battery Life		Waterproof level
ME-BW10F	Standard type	150N (15kgf)	236 (9.29)	High brightness LED 1 pc used	Approx. 2000 lx ※1	AAA battery ×3 pcs ※2	Continuous on Approx. 5 hours	Equivalent to IP67 ※3	0.37kg/0.81 lb
ME-BW20F	Long type	100N (10kgf)	325 (12.7)						0.4kg/0.88 lb
ME-BW5M	Mechanical lock type	150N (15kgf)	130.5 (5.13)						0.3kg/0.80 lb

※1 Initial value under the condition of distance 500 mm, new alkaline battery used. ※2 The battery is not included.
 ※3 A level at which no dust enters and no water enters when immersed in water for 30 minutes. Waterproofed is the light part only.

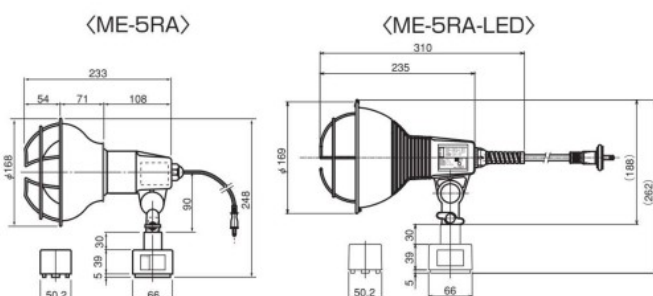
Model ME OUTDOOR TYPE MAGNETIC LAMP STAND

[Application]

Most suitable for area lighting during outdoor work. Small and compact, but the strong magnetic holding power enables this stand to be mounted not only on a horizontal surface, but on an inclined and vertical surfaces easily.

[Features]

- The stand can be installed in any place, removed and relocated.
- The reflective cover is of 360° drain construction that does not allow deposition of water in any direction. (LED type)
- With the holding position remaining unchanged, only the lighting direction can be changed as desired.
- The protective guard reduces a risk of breakage if the stand falls.
- The work lamp is of highly safe double insulation construction requiring no grounding. (LED type)



Model	Holding Power	Magnet ON/OFF	Height	Cord Length	Bulb Capacity	Accessory Bulb	Mass
ME-5RA	1000N (100kgf)	Not provided	248 (9.76)	5m (196.8)	100VAC 200W	Provided	2kg/4.4 lb
ME-5RA-LED	1000N (100kgf)	Not provided	262 (10.3)	5m (196.8)	100VAC 20W	Provided	2.4kg/5.29 lb

※ The holding power is based on a test piece of SS400, 10 mm thick, ground surface.
 ※ The power plug is of tracking resistance type.
 ※ ME-5RA comes with HATAYA Model RS-200WH (RF110V180WH) base 26.

LED bulb dedicated to ME-5RA-LED

Model	Bulb Capacity	LED Life	Luminous Flux	Beam Angle	Mass
ME-5RA-LED Exclusive LED bulb	100 VAC 200 W	Approx. 40,000hours	2400lm	60°	0.315kg / 0.694 lb

※ The LED bulb included with ME-5RA-LED is a dedicated bulb. When you require LED bulbs, please contact the nearest dealer or our sales office.