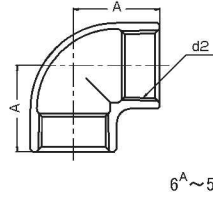


形状・寸法

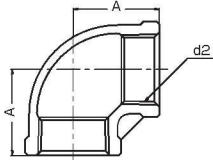
■ 90° エルボ

LL

304(SCS 13A)
316(SCS 14A)



6^A~50^A



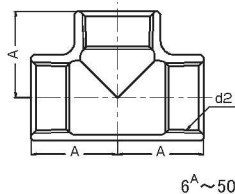
65^A~100^A

呼び径		ねじ d2	寸法(mm)		304 在庫	316 在庫
A (mm)	B (inch)		A			
6	1/8	Rc1/8	19	●	●	
8	1/4	Rc1/4	19	●	●	
10	3/8	Rc3/8	23	●	●	
15	1/2	Rc1/2	27	●	●	
20	3/4	Rc3/4	32	●	●	
25	1	Rc1	38	●	●	
32	1 1/4	Rc1 1/4	46	●	●	
40	1 1/2	Rc1 1/2	48	●	●	
50	2	Rc2	57	●	●	
65	2 1/2	Rc2 1/2	69	●	—	
80	3	Rc3	78	●	—	
100	4	Rc4	97	●	—	

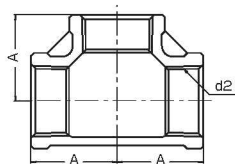
■ チーズ

TL

304(SCS 13A)
316(SCS 14A)



6^A~50^A



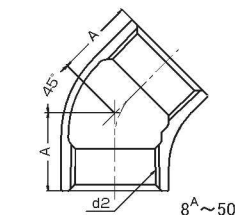
65^A~100^A

呼び径		ねじ d2	寸法(mm)		304 在庫	316 在庫
A (mm)	B (inch)		A			
6	1/8	Rc1/8	19	●	●	
8	1/4	Rc1/4	19	●	●	
10	3/8	Rc3/8	23	●	●	
15	1/2	Rc1/2	27	●	●	
20	3/4	Rc3/4	32	●	●	
25	1	Rc1	38	●	●	
32	1 1/4	Rc1 1/4	46	●	●	
40	1 1/2	Rc1 1/2	48	●	●	
50	2	Rc2	57	●	●	
65	2 1/2	Rc2 1/2	69	●	—	
80	3	Rc3	78	●	—	
100	4	Rc4	97	●	—	

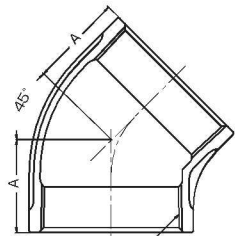
■ 45° エルボ

45L

304(SCS 13A)



8^A~50^A



65^A~100^A

呼び径		ねじ d2	寸法(mm)		304 在庫
A (mm)	B (inch)		A		
8	1/4	Rc1/4	17	●	
10	3/8	Rc3/8	19	●	
15	1/2	Rc1/2	21	●	
20	3/4	Rc3/4	25	●	
25	1	Rc1	29	●	
32	1 1/4	Rc1 1/4	33	●	
40	1 1/2	Rc1 1/2	37	●	
50	2	Rc2	42	●	
65	2 1/2	Rc2 1/2	49	●	
80	3	Rc3	54	●	
100	4	Rc4	64	●	