

SC,OC**CAST IRON CRANK HANDLES****SC**

(Straight Crank, Square Hole)

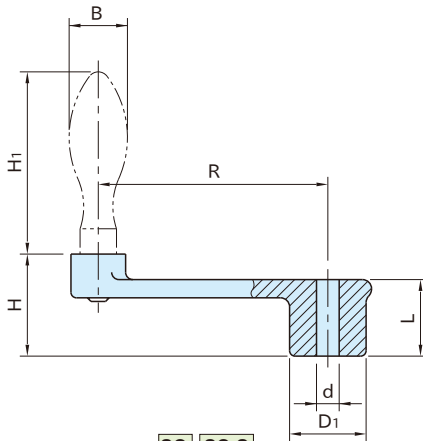
Note : Handle must be ordered separately.

**OC-S**

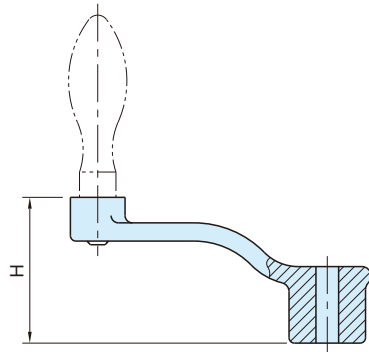
(Offset Crank, Square Hole)

Note : Handle must be ordered separately.

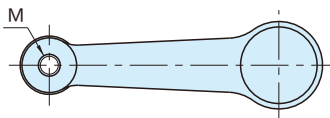
Body
Steel(FCD450) Coated with anticorrosive oil

**SC SC-S**

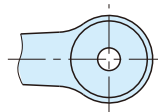
(Straight Crank)

**OC OC-S**

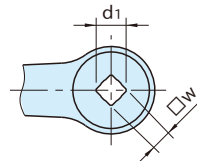
(Offset Crank)

**SC** 1~6**OC** 4~6

(Blank)

**SC** 7~10**OC** 7~10

(Round Hole)

**SC-S** 1~10**OC-S** 4~10

(Square Hole)