

# T-TYPE/W insulating AGGRESSIVE ENVIRONMENTS

inserts		page:
CDD	24 poles + ⊕	76
CDS	9 poles + ⊕	-
CDSH	9 poles + ⊕	86
CDSH NC	6 poles + ⊕	95
CNE	6 poles + ⊕	110
CSE	6 poles + ⊕	-
CSH	6 poles + ⊕	110
CSH S	6 poles + ⊕	122
CCE	6 poles + ⊕	130
CSS	6 poles + ⊕	148
CT, CTSE (16A) *)	6 poles + ⊕	160
CQE	10 poles + ⊕	168
MIXO	2 modules	262 - 317

\*) only for standard insulating version THIW

## housings with single lever FKM gasket

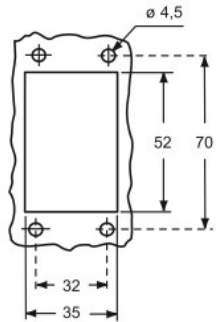


## hoods with single lever, top entry covers, FKM gasket



description	part No.	entry M	part No.	entry M	part No. (with loop)
bulkhead mounting housing with thermoplastic lever	<b>THIW 06 L</b>				
surface mounting housing, thermoplastic lever, high construction	<b>TAPW 06 L25</b>	25			
surface mounting housing, thermoplastic lever, high construction	<b>TAPW 06 L32</b>	32			
with thermoplastic lever and gasket, high construction			<b>TAVW 06 LG25</b>	25	
with thermoplastic lever and gasket, high construction			<b>TAVW 06 LG32</b>	32	
cover with thermoplastic lever and gasket					<b>THCW 06 LG</b>

panel cut-out for bulkhead mounting housings



**TMAO  
Hoods  
(page 480)**



**TMAV  
Hoods  
(page 480)**

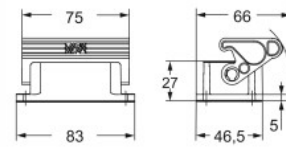
**TCHC L  
TCHC SL  
Covers  
with eyelet  
(page 481)**



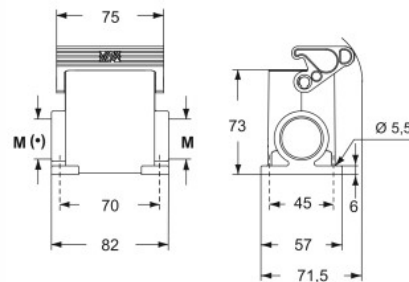
**CAIUS** Type 12



### THIW L

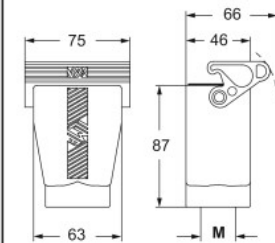


### TAPW L

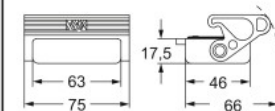


(\*) The surface mounting, high construction housings are supplied with an open threaded entry (\*) and diametrically opposite a closed threaded entry which can be opened by the user if required (with suitable tool).

### TAVW LG



### THCW LG



For fixing on hoods

