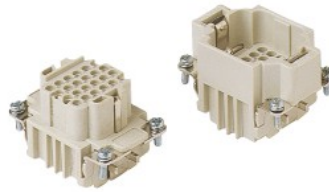


# CDD 24 poles + ⊕ 10A - 250V

enclosures: size "44.27"	page:
C-TYPE IP65 or IP66/IP69	387 - 392
C7 IP67, single lever	436 - 437
V-TYPE IP65 or IP66/IP69, single lever	444 - 447
BIG hoods	466 - 467
T-TYPE IP65 insulating	480 - 481
T-TYPE / W IP66/IP69 insulating	489
HYGIENIC T-TYPE / H IP66/IP69	501
HYGIENIC T-TYPE / C IP66/IP69, -50 °C	506
W-TYPE for aggressive environments	521
E-Xtreme® corrosion proof	530 - 531, 542, 550 - 551
EMC	578
Central lever	603 - 605
LS-TYPE	618 - 619
IP68	632 - 635
panel supports:	page:
COB	652 - 653

## inserts, crimp connections



## 10A crimp contacts silver and gold plated



PCBs interface, see article CIF 2.4 on page 670

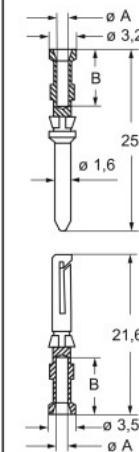
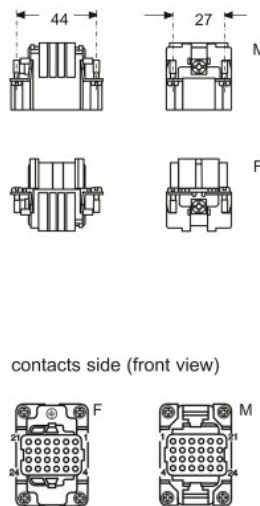
description	part No.	part No.	part No.
without contacts (to be ordered separately)			
female inserts for female contacts	<b>CDDF 24</b>		
male inserts for male contacts	<b>CDDM 24</b>		
10A female contacts			
0,14-0,37 mm <sup>2</sup> AWG 26-22 identification No. 1		<b>CDFA 0.3</b>	<b>CDFD 0.3</b>
0,5 mm <sup>2</sup> AWG 20 identification No. 2		<b>CDFA 0.5</b>	<b>CDFD 0.5</b>
0,75 mm <sup>2</sup> AWG 18 identification No. ②		<b>CDFA 0.7</b>	<b>CDFD 0.7</b>
1 mm <sup>2</sup> AWG 18 identification No. 3		<b>CDFA 1.0</b>	<b>CDFD 1.0</b>
1,5 mm <sup>2</sup> AWG 16 identification No. 4		<b>CDFA 1.5</b>	<b>CDFD 1.5</b>
2,5 mm <sup>2</sup> AWG 14 identification No. 5		<b>CDFA 2.5</b>	<b>CDFD 2.5</b>
10A male contacts			
0,14-0,37 mm <sup>2</sup> AWG 26-22 identification No. 1		<b>CDMA 0.3</b>	<b>CDMD 0.3</b>
0,5 mm <sup>2</sup> AWG 20 identification No. 2		<b>CDMA 0.5</b>	<b>CDMD 0.5</b>
0,75 mm <sup>2</sup> AWG 18 identification No. ②		<b>CDMA 0.7</b>	<b>CDMD 0.7</b>
1 mm <sup>2</sup> AWG 18 identification No. 3		<b>CDMA 1.0</b>	<b>CDMD 1.0</b>
1,5 mm <sup>2</sup> AWG 16 identification No. 4		<b>CDMA 1.5</b>	<b>CDMD 1.5</b>
2,5 mm <sup>2</sup> AWG 14 identification No. 5		<b>CDMA 2.5</b>	<b>CDMD 2.5</b>

- characteristics according to EN 61984:

**10A 250V 4kV 2**

- certified

- rated voltage according to UL/CSA: 600V
- insulation resistance: ≥ 10 GΩ
- ambient temperature limit: -40 °C ... +125 °C
- made of self-extinguishing thermoplastic resin UL 94V-0
- mechanical life: ≥ 500 cycles
- contact resistance: ≤ 3 mΩ
- for applications requiring higher voltages, please see the special voltage application section on page 75
- **it is recommended to crimp the contacts with crimping tools homologated by ILME** (please see the crimping tool section 10A contacts, CDF and CDM series on pages 708 - 741)
- for max. current load see the connector inserts derating diagram below; for more information see page 28

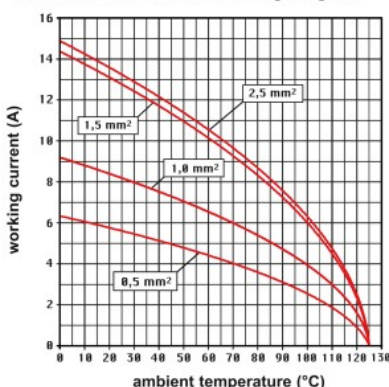


### CDF and CDM contacts

conductor section mm <sup>2</sup>	conductor slot ø A (mm)	conductors stripping length B (mm)
0,14-0,37	0,9	8
0,5	1,1	8
0,75	1,3	8
1,0	1,45	8
1,5	1,8	8
2,5	2,2	6

† for basic or high thickness gold plating, please refer to page 674

**CDD 24 poles connector inserts**  
Maximum current load derating diagram



CR CP coding pin with loss of one contact (page 689)

