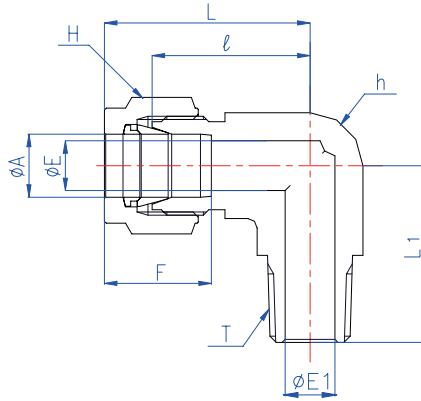


BI-LoK

MDLN

Male Elbow
Connects metric tube to female tapered pipe thread



[Note] E :European Standard

Part No.		A	T	E	E1	h	H	l	L	L1	F
ANSI NPT	ISO/JIS R	mm	NPT/R	mm	mm	Flat	HEX	mm	mm	mm	mm
MDLN 3M-2	MDLN 3M-R2	3	1/8	2.4	4.8	12	12	16.8	23.5	18.5	13.0
MDLN 3M-4	MDLN 3M-R4	3	1/4	2.4	7.1	14	12	18.3	25.0	24.0	13.0
MDLN 4M-2	MDLN 4M-R2	4	1/8	2.7	4.8	12	13	19.0	25.8	19.0	13.9
MDLN 4M-4	MDLN 4M-R4	4	1/4	2.7	7.1	14	13	19.0	25.8	24.0	13.9
MDLN 4M-6	MDLN 4M-R6	4	3/8	2.7	10.4	17	13	21.5	28.3	28.5	13.9
MDLN 6M-2	MDLN 6M-R2	6	1/8	4.8	4.8	12	14	22.4	29.9	20.6	15.4
	MDLN 6M-R2E	6	1/8	4.8	4.8	12	14	19.6	27.1	18.8	15.4
MDLN 6M-4	MDLN 6M-R4	6	1/4	4.8	7.1	14	14	22.4	29.9	25.4	15.4
MDLN 6M-4E		6	1/4	4.8	7.1	14	14	19.6	27.1	23.4	15.4
MDLN 6M-6	MDLN 6M-R6	6	3/8	4.8	10.4	17	14	24.0	31.5	28.5	15.4
	MDLN 6M-R6E	6	3/8	4.8	10.4	17	14	22.4	29.9	26.2	15.4
MDLN 6M-8	MDLN 6M-R8	6	1/2	4.8	12.7	24	14	26.2	33.7	33.5	15.4
MDLN 6M-12		6	3/4	4.8	12.7	27	14	28.2	35.7	35.5	15.4
	MDLN 6M-R12	6	3/4	4.8	12.7	27	14	28.2	35.7	37.5	15.4
MDLN 8M-2	MDLN 8M-R2	8	1/8	6.4	4.8	14	17	22.5	30.0	20.5	16.3
MDLN 8M-4	MDLN 8M-R4	8	1/4	6.4	7.1	14	17	22.5	30.0	25.5	16.3
MDLN 8M-6	MDLN 8M-R6	8	3/8	6.4	10.4	17	17	24.0	31.5	28.5	16.3
	MDLN 8M-R6E	8	3/8	6.4	10.4	17	17	23.1	30.6	26.2	16.3
MDLN 8M-8	MDLN 8M-R8	8	1/2	6.4	12.7	24	17	26.2	33.7	33.5	16.3
MDLN 10M-2	MDLN 10M R2	10	1/8	7.9	4.8	17	19	25.4	33.2	24.4	17.3
MDLN 10M-4	MDLN 10M-R4	10	1/4	7.9	7.1	17	19	25.4	33.2	28.4	17.3
MDLN 10M-6	MDLN 10M-R6	10	3/8	7.9	10.4	17	19	25.4	33.2	28.5	17.3
	MDLN 10M-R6E	10	3/8	7.9	10.4	17	19	23.9	31.7	26.2	17.3
MDLN 10M-8	MDLN 10M-R8	10	1/2	7.9	12.7	24	19	26.2	34.0	33.5	17.3
MDLN 12M-2	MDLN 12M-R2	12	1/8	9.5	4.8	22	22	27.0	37.2	25.5	22.9
MDLN 12M-4	MDLN 12M-R4	12	1/4	9.5	7.1	22	22	27.0	37.2	29.5	22.9
MDLN 12M-6	MDLN 12M-R6	12	3/8	9.5	10.4	22	22	27.0	37.2	29.5	22.9
MDLN 12M-8	MDLN 12M-R8	12	1/2	9.5	12.7	24	22	27.0	37.2	34.0	22.9
MDLN 12M-12		12	3/4	9.5	18.3	27	22	28.2	38.4	35.5	22.9
	MDLN 12M-R12	12	3/4	9.5	18.3	27	22	28.2	38.4	37.5	22.9
MDLN 15M-4	MDLN 15M-R4	15	1/4	12.0	7.1	24	27	28.0	38.0	34.0	24.3
MDLN 15M-6	MDLN 15M-R6	15	3/8	12.0	10.4	24	27	28.0	38.0	35.3	24.3
MDLN 15M-8	MDLN 15M-R8	15	1/2	12.0	12.7	24	27	28.0	38.0	35.3	24.3
MDLN 15M-12		15	3/4	12.0	18.3	27	27	28.2	38.2	35.5	24.3
	MDLN 15M-R12	15	3/4	12.0	18.3	27	27	28.2	38.2	37.5	24.3
MDLN 16M-4	MDLN 16M-R4	16	1/4	12.7	7.1	24	27	28.0	38.2	34.0	24.5
MDLN 16M-6	MDLN 16M-R6	16	3/8	12.7	10.4	24	27	28.0	38.2	35.3	24.5
MDLN 16M-8	MDLN 16M-R8	16	1/2	12.7	12.7	24	27	28.0	38.2	35.3	24.5
MDLN 16M-12		16	3/4	12.7	18.3	27	27	28.2	38.4	35.5	24.5
	MDLN 16M-R12	16	3/4	12.7	18.3	27	27	28.2	38.4	37.5	24.5