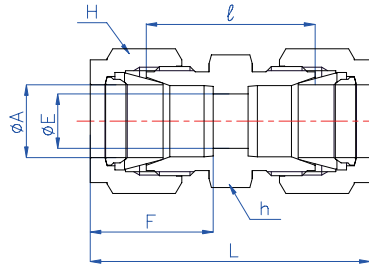


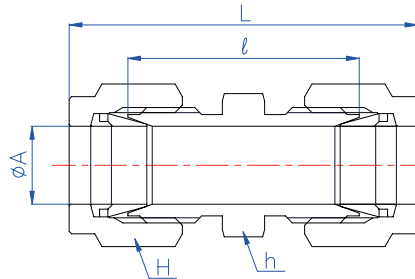
BI-LoK	DUA	Union Connects fractional tubes
---------------	------------	---



H : See dimensional data(Last page)

Part No.	A(Tube O. D)		E	h(HEX)		l	L	F
	in	mm	mm	in	mm	mm	mm	mm
DUA 1	1/16	1.59	1.3	5/16	7.94	17.5	25.5	8.9
DUA 2	1/8	3.18	2.3	7/16	11.11	22.4	35.8	13.0
DUA 3	3/16	4.76	3.0	7/16	11.11	24.0	37.4	13.8
DUA 4	1/4	6.35	4.8	1/2	12.7	26.1	41.1	15.4
DUA 5	5/16	7.94	6.4	9/16	14.29	28.0	43.0	16.3
DUA 6	3/8	9.53	7.1	5/8	15.88	30.2	45.2	17.0
DUA 8	1/2	12.7	10.4	13/16	20.64	31.0	51.6	23.0
DUA 10	5/8	15.88	12.7	15/16	23.81	31.8	52.4	24.6
DUA 12	3/4	19.05	15.8	1-1/16	26.99	33.3	53.9	24.6
DUA 14	7/8	22.23	18.3	1-3/16	30.16	35.0	55.9	26.1
DUA 16	1	25.4	22.5	1-3/8	34.93	40.5	65.7	31.6

BI-LoK	DUAZ	Union / Bored-through Connects fractional tubes
---------------	-------------	---



Part No.	A(Tube O. D)		h(HEX)		H(HEX)		l	L
	in	mm	in	mm	in	mm	mm	mm
DUAZ 1	1/16	1.59	5/16	7.94	5/16	7.94	17.5	25.5
DUAZ 2	1/8	3.18	7/16	11.11	7/16	11.11	22.4	35.8
DUAZ 3	3/16	4.76	7/16	11.11	1/2	12.7	24.0	37.4
DUAZ 4	1/4	6.35	1/2	12.7	9/16	14.29	26.1	41.1
DUAZ 5	5/16	7.94	9/16	14.29	5/8	15.88	28.0	43.0
DUAZ 6	3/8	9.53	5/8	15.88	11/16	17.46	30.2	45.2
DUAZ 8	1/2	12.7	13/16	20.64	7/8	22.23	31.0	51.6
DUAZ 10	5/8	15.88	15/16	23.81	1	25.4	31.8	52.4
DUAZ 12	3/4	19.05	1-1/16	26.99	1-1/8	28.58	33.3	53.9
DUAZ 14	7/8	22.23	1-3/16	30.16	1-1/4	31.75	35.0	55.9
DUAZ 16	1	25.4	1-3/8	34.93	1-1/2	38.1	40.5	65.7