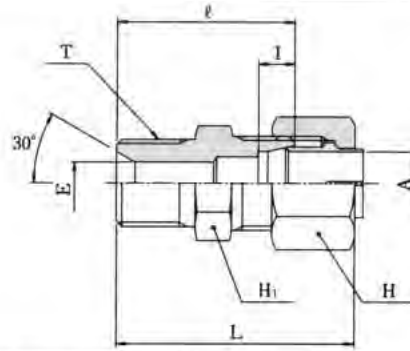


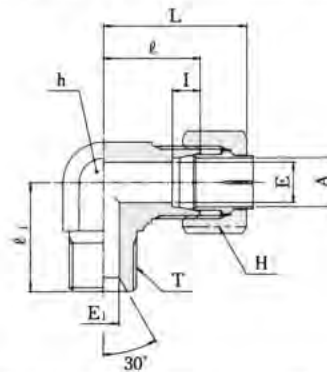
ホース接続ユニオン
(めすシート)
FEMALE SEAT
HOSE CONNECTION
UNION



Unit : mm

継手の呼び Part No.	Tube OD A	(G) T	Minimum Opening E	六角対辺 Hex.		I	ℓ	Approx. L (約)	重量 (kg)
				H ₁	H				
KUD08-020CE	8	1/4	5.5	14	14	5.5	26.5	36.5	0.029
KUD08-030CE	8	3/8	6	17	14	5.5	29.5	39.5	0.038
KUD10-020CE	10	1/4	5.5	14	17	5.5	27	37	0.033
KUD10-030CE	10	3/8	8	17	17	5.5	30	40	0.043
KUD12-020CE	12	1/4	5.5	17	19	6	28	38	0.040
KUD12-030CE	12	3/8	8	17	19	6	30	40	0.046
KUD12-040CE	12	1/2	10	22	19	6	34.5	44.5	0.071
KUD16-030CE	16	3/8	8	22	27	8	33.5	46.1	0.093
KUD16-040CE	16	1/2	10	22	27	8	36.5	49.1	0.105
KUD20-040CE	20	1/2	10	27	30	8	36.5	50.8	0.126
KUD20-060CE	20	3/4	16	27	30	8	38.5	52.8	0.131
KUD25-060CE	25	3/4	16	32	36	9	41.5	56.3	0.183
KUD25-080CE	25	1	21.5	36	36	9	44.5	59.3	0.226
KUD30-060CE	30	3/4	16	36	41	9	43	58.3	0.238
KUD30-080CE	30	1	21.5	36	41	9	45	60.3	0.256

ホース接続
ユニオン エルボ(めすシート)
FEMALE SEAT
HOSE CONNECTION
UNION ELBOW



Unit : mm

継手の呼び Part No.	Tube OD A	(G) T	E	E ₁	二面幅 Flats h	六角対辺 Hex. H	I	ℓ ₁	ℓ	Approx. L (約)	重量 (kg)
KLE08-030CE	8	3/8	6	8	17	14	5.5	26.5	20.5	30.5	0.063
KLE10-020CE	10	1/4	8	5.5	14	17	5.5	24	20	30	0.048
KLE10-030CE	10	3/8	8	8	17	17	5.5	26.5	21	31	0.067
KLE12-020CE	12	1/4	10	5.5	17	19	6	25	21	31	0.067
KLE12-030CE	12	3/8	10	8	17	19	6	26.5	21	31	0.073
KLE12-040CE	12	1/2	10	10	24	19	6	33	24	34	0.141
KLE16-030CE	16	3/8	13	8	24	27	8	30	28	40.6	0.164
KLE16-040CE	16	1/2	13	10	24	27	8	33	28	40.6	0.179
KLE20-040CE	20	1/2	17	10	27	30	8	35	30.5	44.8	0.174
KLE20-060CE	20	3/4	17	16	30	30	8	38	30.5	44.8	0.267
KLE25-060CE	25	3/4	22	16	36	36	9	41	35.5	50.3	0.407
KLE25-080CE	25	1	22	21.5	36	36	9	43	35.5	50.3	0.413
KLE30-060CE	30	3/4	26	16	41	41	9	44	39.5	54.8	0.550
KLE30-080CE	30	1	26	21.5	41	41	9	46	39.5	54.8	0.570