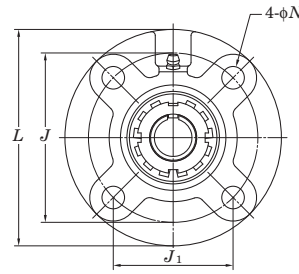
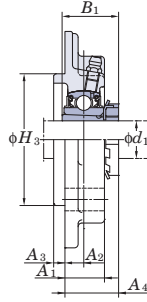


4-Bolt Flange Cartridge Units

UKFC

Tapered bore (with adapter)

d_1 20 ~ 65 mm



Shaft Dia. mm inch	d_1	Dimensions inch mm										Bolt Size inch mm	Standard		
		L	H ₃	J	J ₁	N	A ₁	A ₂	A ₃	A ₄	B ₁		Unit No.	Housing No.	Bearing No.
20	3/4	4 17/32 115	2.7559 70	3 35/64 90	2 1/2 63.6	15/32 12	13/16 21	25/64 10	15/64 6	1 3/16 30	1 3/8 35	3/8 M10	UKFC205	FC205	UK205
	3/4	4 3/8 111	2.9921 76	3 5/8 92	2 9/16 65	3/8 9.5	15/16 24	25/64 10	15/64 6	1 5/32 29.5	1 3/8 35	5/16 M8	UKFCX05	FCX05	UKX05
25	1	4 29/32 125	3.1496 80	3 15/16 100	2 25/32 70.7	15/32 12	29/32 23	25/64 10	5/16 8	1 1/4 31.5	1 1/2 38	3/8 M10	UKFC206	FC206	UK206
	1	5 127	3.3465 85	4 9/64 105	2 59/64 74.2	15/32 12	7/8 22.5	5/16 8	3/8 9.5	1 5/32 29	1 1/2 38	3/8 M10	UKFCX06	FCX06	UKX06
30	1 1/8	5 5/16 135	3.5433 90	4 21/64 110	3 1/16 77.8	35/64 14	1 1/32 26	7/16 11	5/16 8	1 3/8 35	1 11/16 43	7/16 M12	UKFC207	FC207	UK207
	1 1/8	5 1/4 133	3.6220 92	4 3/8 111	3 3/32 78.5	15/32 12	1 1/32 26	23/64 9	7/16 11	1 1/4 31.5	1 11/16 43	3/8 M10	UKFCX07	FCX07	UKX07
35	1 1/4	5 23/32 145	3.9370 100	4 23/32 120	3 11/32 84.8	35/64 14	1 1/32 26	7/16 11	25/64 10	1 1/2 38	1 13/16 46	7/16 M12	UKFC208	FC208	UK208
	1 3/8	5 1/4 133	3.6220 92	4 3/8 111	3 3/32 78.5	15/32 12	1 1/32 26	23/64 9	7/16 11	1 5/16 33.5	1 13/16 46	3/8 M10	UKFCX08	FCX08	UKX08
40	1 1/2	6 5/16 160	4.1339 105	5 13/64 132	3 43/64 93.3	5/8 16	1 1/32 26	25/64 10	15/32 12	1 17/32 39	1 31/32 50	1/2 M14	UKFC209	FC209	UK209
	1 1/2	6 3/32 155	4.2520 108	5 1/8 130	3 5/8 91.9	35/64 14	31/32 25	5/16 8	15/32 12	1 5/16 33.5	1 31/32 50	7/16 M12	UKFCX09	FCX09	UKX09
45	1 3/4	6 1/2 165	4.3307 110	5 7/16 138	3 27/32 97.6	5/8 16	1 3/32 28	25/64 10	15/32 12	1 9/16 40	2 5/32 55	1/2 M14	UKFC210	FC210	UK210
	1 3/4	6 3/8 162	4.6457 118	5 23/64 136	3 25/32 96.2	35/64 14	31/32 25	9/32 7	5/8 16	1 11/32 34.5	2 5/32 55	7/16 M12	UKFCX10	FCX10	UKX10
50	1 7/8	7 9/32 185	4.9213 125	5 29/32 150	4 11/64 106.1	3/4 19	1 7/32 31	33/64 13	15/32 12	1 25/32 45.5	2 5/16 59	5/8 M16	UKFC211	FC211	UK211
	2	7 3/32 180	5 127	5 63/64 152	4 15/64 107.5	5/8 16	1 1/32 26	5/32 4	55/64 22	1 5/16 33	2 5/16 59	1/2 M14	UKFCX11	FCX11	UKX11
55	2 1/8	7 11/16 195	5.3150 135	6 19/64 160	4 29/64 113.1	3/4 19	1 13/32 36	43/64 17	15/32 12	2 3/32 53.5	2 7/16 62	5/8 M16	UKFC212	FC212	UK212
	2 1/8	7 5/8 194	5.5118 140	6 1/2 165	4 19/32 116.7	5/8 16	1 5/16 33	7/16 11	25/32 20	1 21/32 42	2 7/16 62	1/2 M14	UKFCX12	FCX12	UKX12
60	2 1/4	8 1/16 205	5.7087 145	6 11/16 170	4 47/64 120.2	3/4 19	1 13/32 36	5/8 16	35/64 14	2 3/32 53.5	2 9/16 65	5/8 M16	UKFC213	FC213	UK213
	2 3/8	7 5/8 194	5.5118 140	6 1/2 165	4 19/32 116.7	5/8 16	1 5/16 33	7/16 11	25/32 20	1 25/32 45	2 9/16 65	1/2 M14	UKFCX13	FCX13	UKX13
65	2 1/2	8 21/32 220	6.2992 160	7 1/4 184	5 1/8 130.1	3/4 19	1 9/16 40	45/64 18	5/8 16	2 5/16 58.5	2 7/8 73	5/8 M16	UKFC215	FC215	UK215
	2 1/2	8 3/4 222	6.4567 164	7 31/64 190	5 9/32 134.3	3/4 19	1 3/8 35	15/32 12	55/64 22	1 7/8 48	2 7/8 73	5/8 M16	UKFCX15	FCX15	UKX15

- Remarks 1. In Part No. of unit and units with covers, fitting codes follow bore diameter numbers. (See Table 10.5 in P.62.)
 2. Part No. of applicable grease fittings are shown below.
 A-1/4-28UNF 205~210, X05~X09
 A-R1/8..... 211~218, X10~X20